

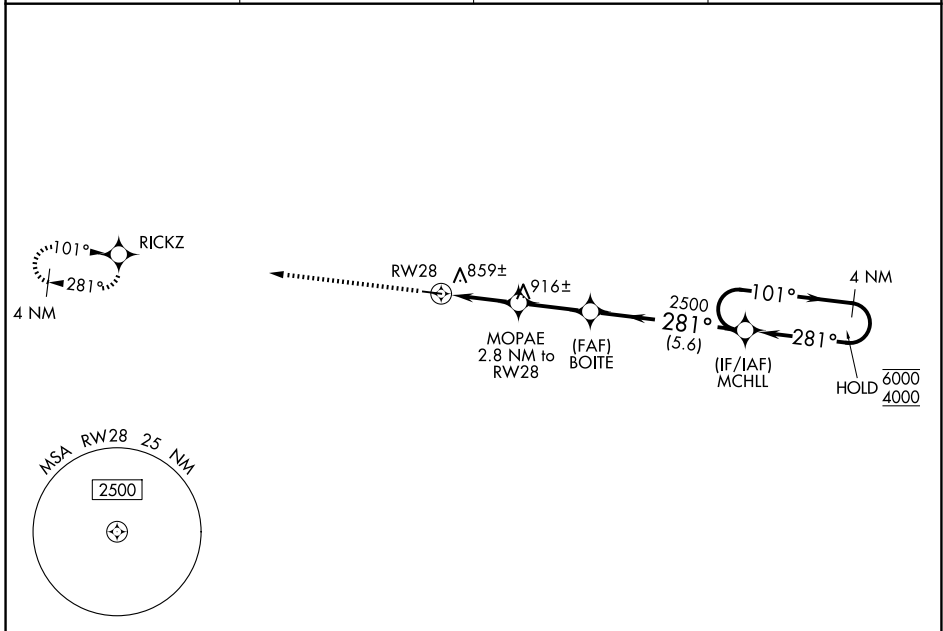
WAAS CH 77842 W28A	APP CRS 281°	Rwy Ldg 4000 TDZE 732 Apt Elev 732
--	------------------------	---

RNAV (GPS) RWY 28

BRECKINRIDGE COUNTY (I93)

RNP APCH.	Baro-VNAV NA. Use Fort Knox altimeter setting, when not received, use Elizabethtown altimeter setting and increase LPV DA to 1047, LNAV/VNAV DA to 1185 and all MDA 20 feet.	MISSED APPROACH: Climb to 4000 direct RICKZ and hold, continue climb-in-hold to 4000.
-----------	--	---

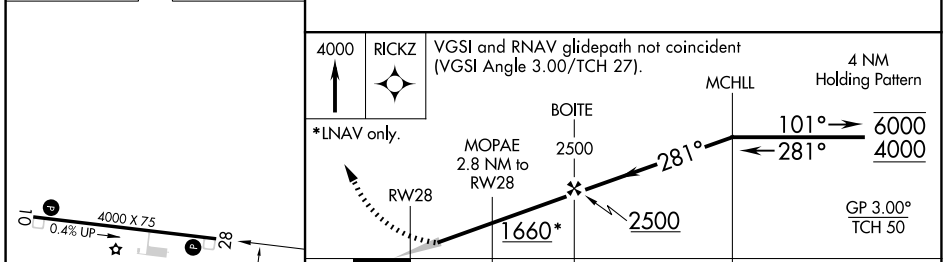
AWOS-3PT 123.625	KFTK ATIS ★ 109.6	LOUISVILLE APP CON 123.675 327.0	CTAF 122.9 0
----------------------------	-----------------------------	--	------------------------



SE-1, 14 MAY 2026 to 11 JUN 2026

SE-1, 14 MAY 2026 to 11 JUN 2026

ELEV 732	TDZE 732
----------	----------



4000	RICKZ	VGSI and RNAV glidepath not coincident (VGSI Angle 3.00°/TCH 27°).	4 NM Holding Pattern
*LNAV only.	MOPAE 2.8 NM to RWY 28	BOITE 2500	MCHLL
		1660*	2500
	2.8 NM	2.6 NM	5.6 NM
			GP 3.00° TCH 50

CATEGORY	A	B	C	D
LPV DA		1040-1	308 (400-1)	
LNAV/VNAV DA		1178-1 ³ / ₈	446 (500-1 ³ / ₈)	
LNAV MDA	1180-1	448 (500-1)	1180-1 ³ / ₈	448 (500-1 ³ / ₈)
CIRCLING	1380-1 648 (700-1)	1480-1 748 (800-1)	1480-2 ¹ / ₄ 748 (800-2 ¹ / ₄)	1480-2 ¹ / ₂ 748 (800-2 ¹ / ₂)