

APP CRS	Rwy Idg	3199
087°	TDZE	752
	Apt Elev	752

RNAV (GPS) RWY 9

BUFFALO-LANCASTER RGNL (BQR)

RNP APCH - GPS.

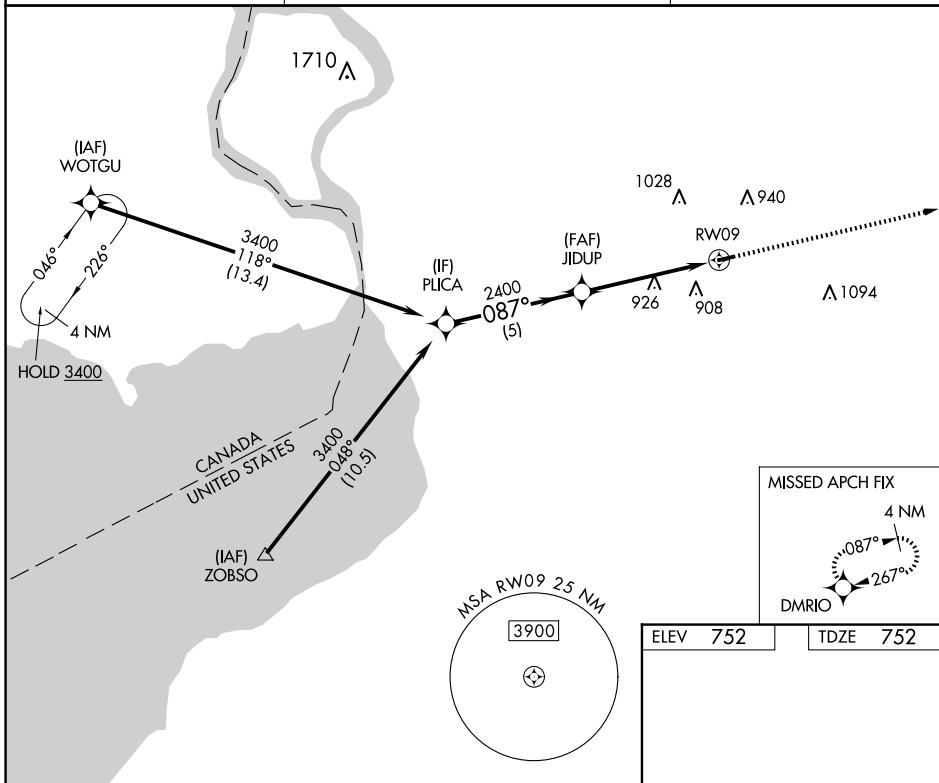
⚠ NA When Circling to Rwy 27 at night, operational VGSI required, remain on or above VGSI glidepath until threshold. Rwy 9 helicopter visibility reduction below 3/4 SM NA. Use Buffalo Niagara Intl altimeter setting.

MISSED APPROACH: Climb to 3400 direct DMRIO and hold, continue climb-in-hold to 3400.

BUF ASOS
135.35

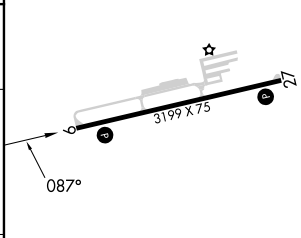
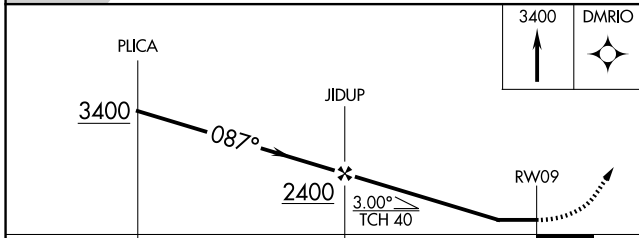
BUFFALO APP CON
126.15 263.125

UNICOM
123.05 (CTAF) 0



NE-2, 14 MAY 2026 to 11 JUN 2026

NE-2, 14 MAY 2026 to 11 JUN 2026



CATEGORY	A	B	C	D
LNVA MDA	1200-1	448 (500-1)		NA
CIRCLING	1220-1 468 (500-1)	1320-1 568 (600-1)		NA

MIRL Rwy 9-27 **0**
REIL Rws 9 and 27 **0**