

WAAS CH <b>56637</b> <b>W25A</b>	APP CRS <b>248°</b>	Rwy Ldg TDZE <b>3900</b> <b>966</b>	Apt Elev <b>966</b>
----------------------------------------	------------------------	-------------------------------------------	------------------------

# RNAV (GPS) RWY 25

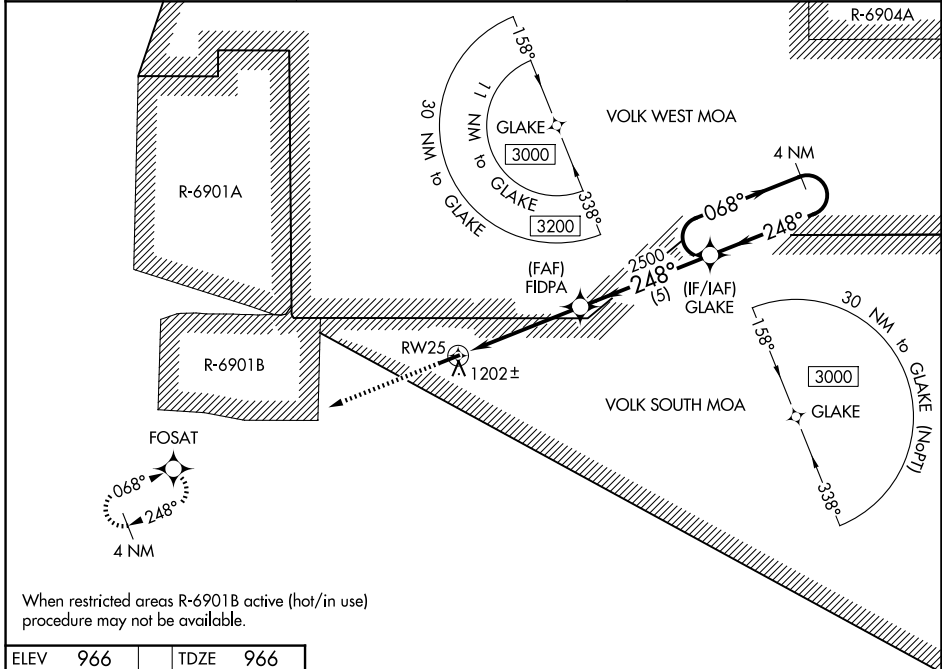
BLOYER FLD (Y72)

RNP APCH - GPS.

Obtain local altimeter setting on CTAF, when not received, use CMY altimeter setting and increase all MDAs 20 feet. Rwy 7 helicopter visibility reduction below 1 SM NA. Procedure NA at night.

MISSED APPROACH: Climb to 3000 direct FOSAT and hold.

VOLK APP CON ★ <b>135.25 244.875</b>	VOLK CTAF <b>127.5</b>	CTAF <b>122.9</b>
-----------------------------------------	---------------------------	----------------------

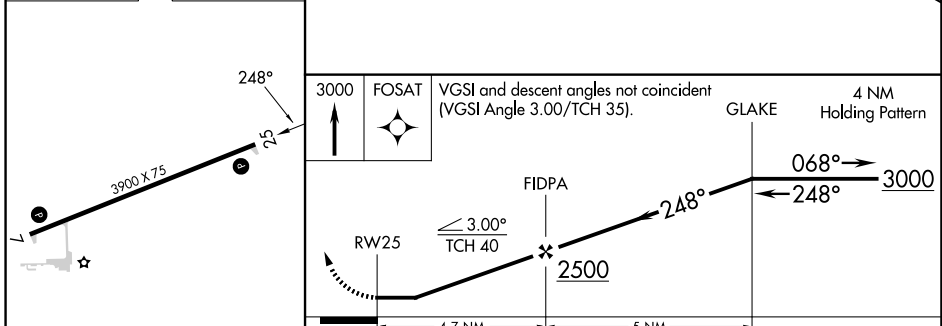


EC-3, 14 MAY 2026 to 11 JUN 2026

EC-3, 14 MAY 2026 to 11 JUN 2026

When restricted areas R-6901B active (hot/in use) procedure may not be available.

ELEV 966	TDZE 966
----------	----------



CATEGORY	A	B	C	D
LP MDA	1440-1	474 (500-1)	1440-1 <sup>3</sup> / <sub>8</sub> 474 (500-1 <sup>3</sup> / <sub>8</sub> )	NA
LNAV MDA	1480-1	514 (600-1)	1480-1 <sup>3</sup> / <sub>8</sub> 514 (600-1 <sup>3</sup> / <sub>8</sub> )	NA
CIRCLING	1540-1 574 (600-1)	1560-1 594 (600-1)	1660-2 694 (700-2)	NA

MIRL Rwy 7-25  
REIL Rwy 7 and 25