

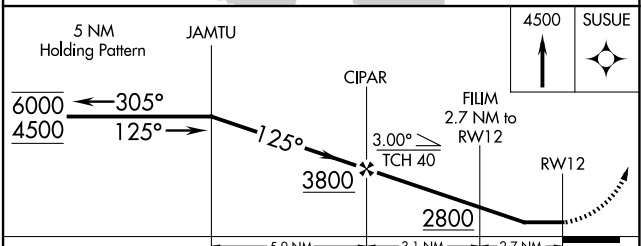
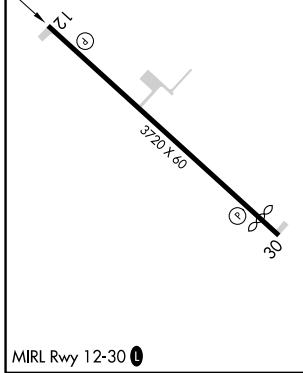
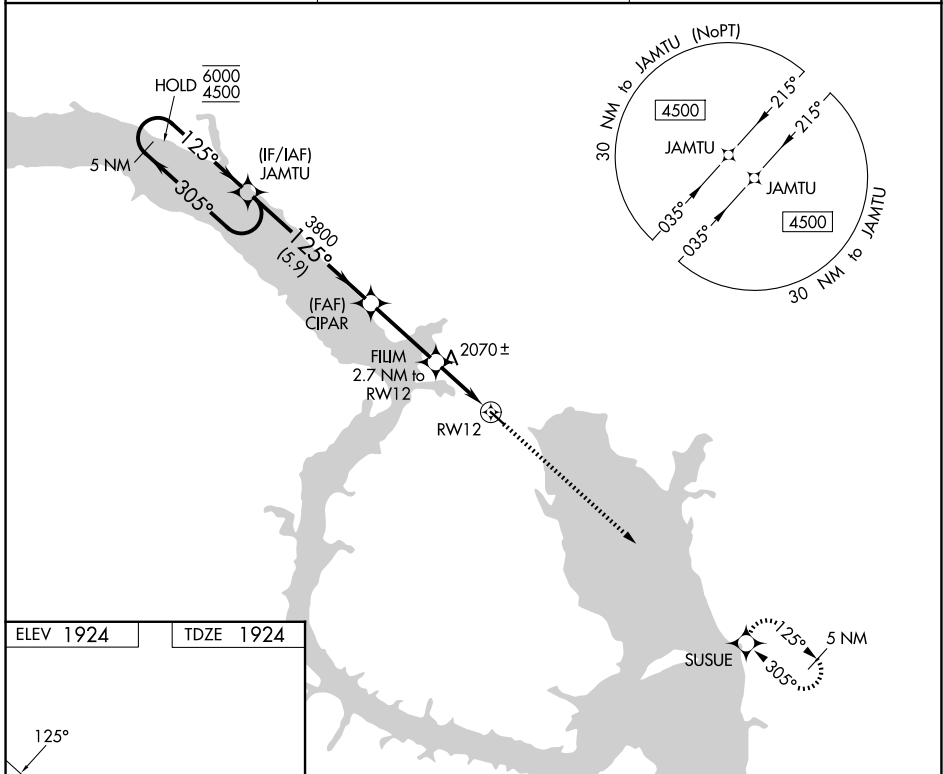
APP CRS	Rwy Ldg	3720
125°	TDZE	1924
	Apt Elev	1924

RNAV (GPS) RWY 12

NEW TOWN MUNI (Ø5D)

RNP APCH - GPS.	MISSED APPROACH: Climb to 4500 direct SUSUE and hold.
▼ Use 08D altimeter setting; when not received, use D60 altimeter setting and increase all MDAs 40 feet. Increase LNAV Cat C visibility 1/8 SM. Rwy 12 helicopter visibility reduction below 3/4 SM NA. ▲ NA	

08D AWOS-3 121.1	MINNEAPOLIS CENTER 127.6 279.6	CTAF 122.9
----------------------------	--	----------------------



CATEGORY	A	B	C	D
LNAV MDA	2420-1	496 (500-1)	2420-1 3/8 496 (500-1 3/8)	NA
CIRCLING	2500-1 576 (600-1)	2620-1 696 (700-1)	2760-2 1/2 836 (900-2 1/2)	NA

NC-1, 14 MAY 2026 to 11 JUN 2026

NC-1, 14 MAY 2026 to 11 JUN 2026