

WAAS CH 72844 W35A	APP CRS 353°	Rwy Ldg TDZE 1621 Apt Elev 1633
--	------------------------	---

RNAV (GPS) RWY 35

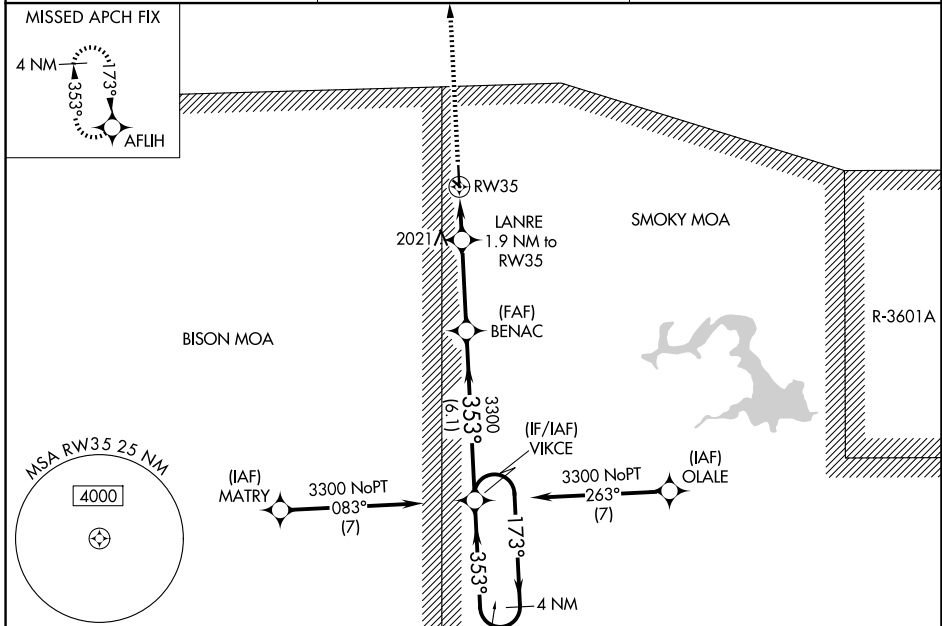
ELLSWORTH MUNI (9K7)

RNP APCH - GPS.

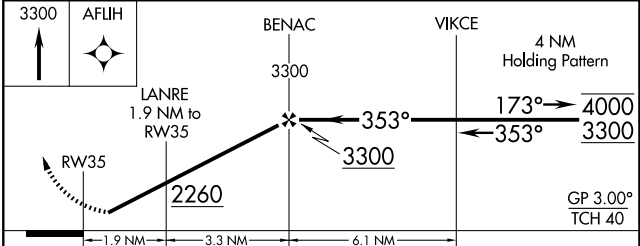
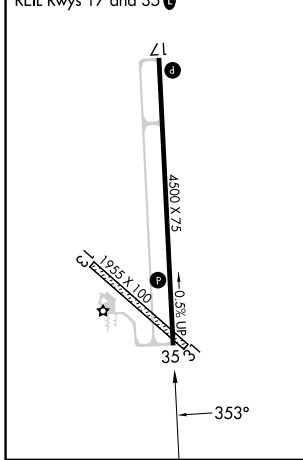
⚠ Circling NA to Rwy 13 and 31. Rwy 35 helicopter visibility reduction below $\frac{3}{4}$ NA. For uncompensated Baro-VNAV systems, LNAV/VNAV NA below -18°C or above 54°C.

MISSED APPROACH: Climb to 3300 direct AFUHI and hold.

AWOS-3PT 119.675	KANSAS CITY CENTER 134.9 363.2	UNICOM 122.7 (CTAF) 0
----------------------------	--	---------------------------------



ELEV 1633	TDZE 1621
MIRL Rwy 17-35	REIL Rwy 17 and 35



CATEGORY	A	B	C	D
LPV DA	1871-1 250 (300-1)			NA
LNAV/VNAV DA	2094-1 $\frac{3}{8}$ 473 (500-1 $\frac{3}{8}$)			NA
LNAV MDA	2160-1	539 (600-1)	2160-1 $\frac{1}{2}$ 539 (600-1 $\frac{1}{2}$)	NA
CIRCLING	2200-1	567 (600-1)	2540-2 $\frac{3}{4}$ 907 (1000-2 $\frac{3}{4}$)	NA

NC-2, 14 MAY 2026 to 11 JUN 2026

NC-2, 14 MAY 2026 to 11 JUN 2026