

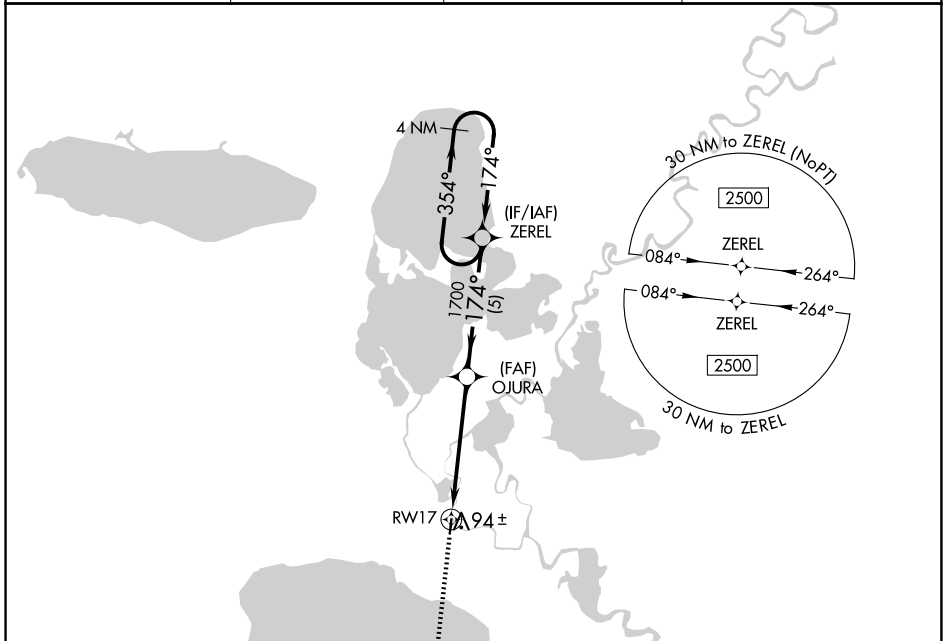
APP CRS	Rwy Idg	<b>3000</b>
<b>174°</b>	TDZE	<b>48</b>
	Apt Elev	<b>48</b>

# RNAV (GPS) RWY 17

KASIGLUK (Z09) (PFKA)

 	DME/DME RNP-0.3 NA. Use Nunapitchuk altimeter setting, when not received, use Bethel altimeter setting.	MISSED APPROACH: Climb to 2600 direct UNAWO and hold.

16A/PPT AWOS-3P <b>121.55</b>	BET/PABE ASOS <b>135.45</b>	ANCHORAGE CENTER <b>125.2 372.0</b>	CTAF <b>122.9</b>
----------------------------------	--------------------------------	--	----------------------



AK, 14 MAY 2026 to 09 JUL 2026

AK, 14 MAY 2026 to 09 JUL 2026

