

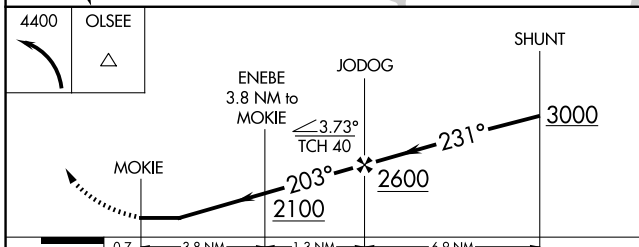
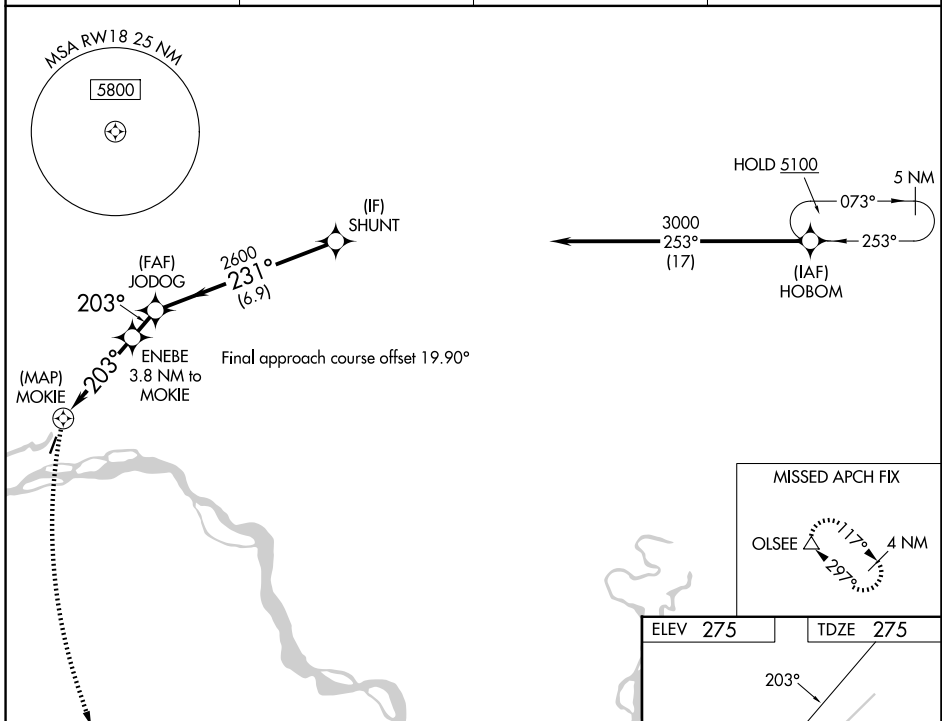
WAAS CH 69541 W18A	APP CRS 203°	Rwy Ldg TDZE Apt Elev	3400 275 275
--	------------------------	-----------------------------	---

RNAV (GPS) RWY 18

MANLEY HOT SPRINGS (MLY)(P.A.M.L)

RNP APCH - GPS.	<p>Procedure NA at night. Rwy 18 helicopter visibility reduction below 1 SM NA. Circling NA west of Rwy 18-36. Use TAL/PATA altimeter setting; when not received, procedure NA.</p>	<p>MISSED APPROACH: Climbing left turn to 4400 direct OLSEE and hold.</p>
-----------------	---	---

TAL/PATA ASOS 135.1	ANCHORAGE CENTER 120.9 319.2	FAIRBANKS RADIO 122.3 122.65	UNICOM 122.8(CTAF) 0
-------------------------------	--	--	--------------------------------



ELEV 275	TDZE 275
MIRL Rwy 18-36 0	

CATEGORY	A	B	C	D
LP MDA	1860-1¼ 1585 (1600-1¼)	1860-1½ 1585 (1600-1½)	1860-3 1585 (1600-3)	NA
LNAV MDA	2040-1¼ 1765 (1800-1¼)	2040-1½ 1765 (1800-1½)	2040-3 1765 (1800-3)	NA
CIRCLING	2040-1¼ 1765 (1800-1¼)	2040-1½ 1765 (1800-1½)	2040-3 1765 (1800-3)	NA

AK, 14 MAY 2026 to 09 JUL 2026

AK, 14 MAY 2026 to 09 JUL 2026