

WAAS CH 50146 W15A	APP CRS 153°	Rwy Idg TDZE Apt Elev	6001 6878 6878
--	------------------------	-----------------------------	---

RNAV (GPS) RWY 15

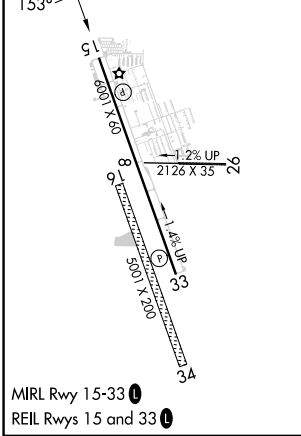
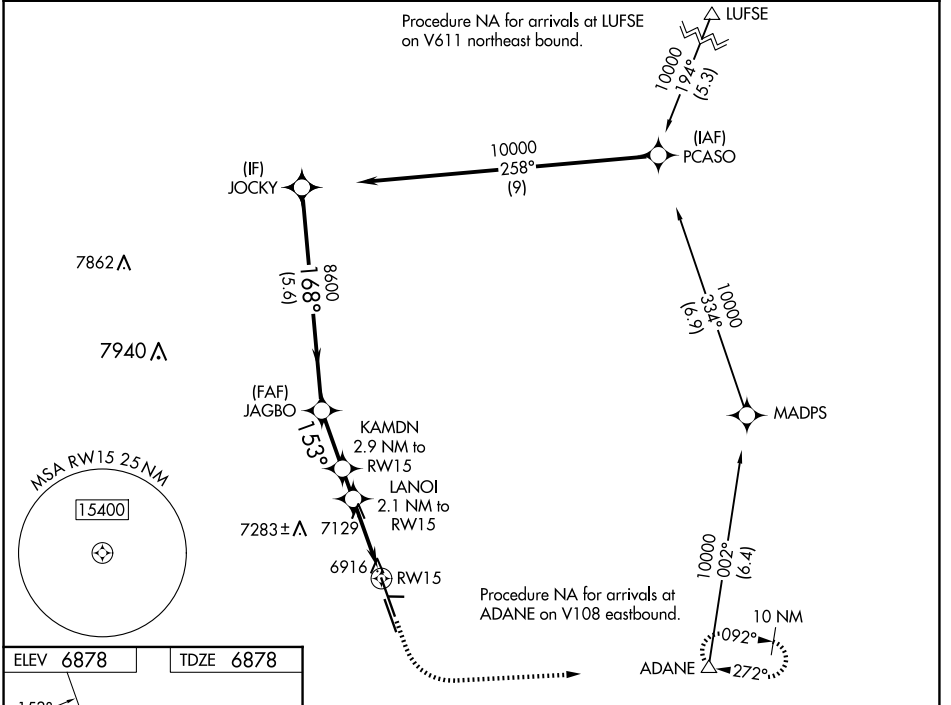
MEADOW LAKE (FLY)

RNP APCH - GPS.

⚠ Rwy 15 helicopter visibility reduction below 1 SM NA. For uncompensated Baro-VNAV systems, LNAV/VNAV NA below -28°C or above 54°C. Circling NA southwest of Rwy 15-33. Circling NA to Rwys 16, 26, 8 and 34. Straight-in Rwy 15 NA at night, Circling Rwy 15 NA at night.

⚠ MISSED APPROACH: Climb to 7400, then climbing left turn to 9800 direct ADANE and hold, continue climb-in-hold to 9800.

AWOS-3PT 118.45	SPRINGS APP CON 124.0 257.875	UNICOM 122.7 (CTAF) ①
---------------------------	---	---------------------------------



JOCKY	VGSi and RNAV glidepath not coincident (VGSi Angle 3.50/TCH 42).		7400	9800	ADANE
10000	JAGBO 8600	KAMDN 2.9 NM to RWY 15	7400	9800	ADANE
GP 3.50° TCH 59	8600	8020	7720		
	5.6 NM	1.6 NM	0.8 NM	2.1 NM	
CATEGORY	A	B	C	D	
LPV DA	7176-1	298 (300-1)		NA	
LNAV/VNAV DA	7343-1 3/8	465 (500-1 3/8)		NA	
LNAV MDA	7400-1	522 (600-1)		NA	
CIRCLING	7400-1 522 (600-1)	7440-1 562 (600-1)		NA	

SW-1, 14 MAY 2026 to 11 JUN 2026

SW-1, 14 MAY 2026 to 11 JUN 2026