

WAAS CH <b>56344</b> <b>W16A</b>	APP CRS <b>163°</b>	Rwy Ldg <b>4700</b> TDZE <b>5374</b> Apt Elev <b>5374</b>
--	------------------------	---

# RNAV (GPS) RWY 16

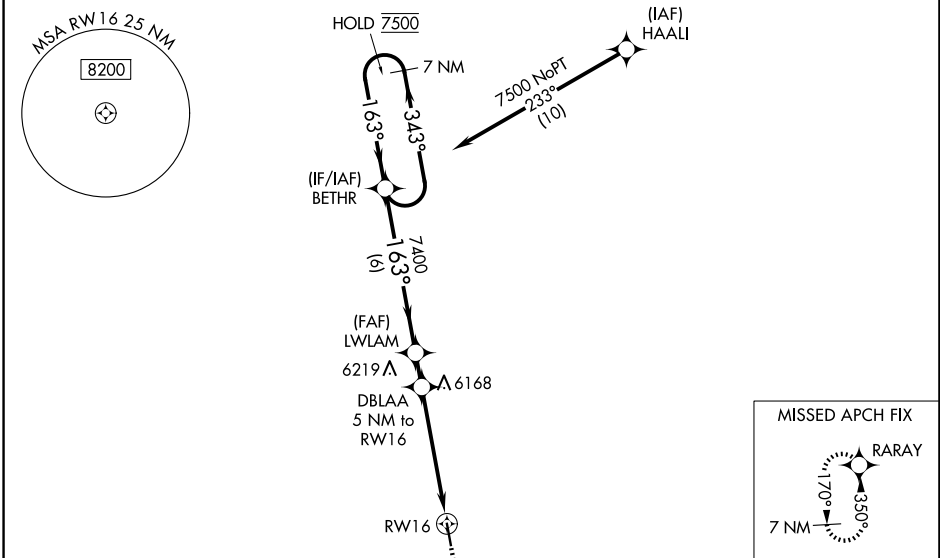
LIMON MUNI (LIC)

RNP APCH - GPS.

⚠ For uncompensated Baro-VNAV systems, LNAV/VNAV NA below -25°C or above 54°C. Baro-VNAV and VDP NA when using CFO altimeter setting. When local altimeter setting not received, use CFO altimeter setting and increase LPV DA to 5760 feet and all visibilities 1/8 SM. Increase LNAV/VNAV DA to 5845 feet and all visibilities 3/8 SM. Increase all MDAs 140 feet and LNAV visibilities Cat B/C 1/2 SM, and Circling all visibilities 1/2 SM.

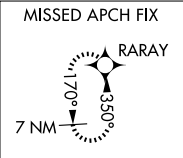
MISSED APPROACH: Climb to 7500 direct RARAY and hold.

ASOS <b>121.125</b>	DENVER CENTER <b>133.4 377.175</b>	CTAF <b>122.9</b>
------------------------	---------------------------------------	----------------------

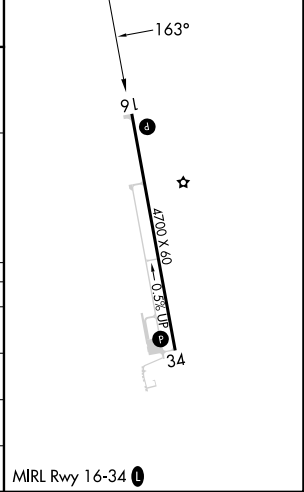
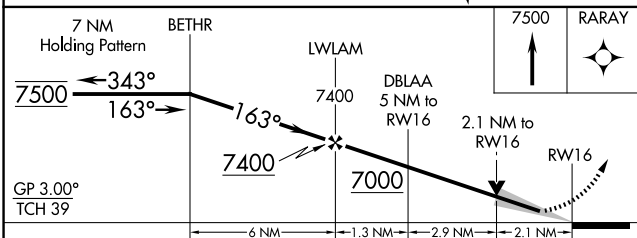


SW-1, 14 MAY 2026 to 11 JUN 2026

SW-1, 14 MAY 2026 to 11 JUN 2026



ELEV 5374	TDZE 5374
-----------	-----------



CATEGORY	A	B	C	D
LPV DA	5624-1 250 (300-1)			NA
LNAV/VNAV DA	5709-1 335 (400-1)			NA
LNAV MDA	6080-1 706 (800-1)		6080-2 706 (800-2)	NA
CIRCLING	6080-1 706 (800-1)		6220-2 1/2 846 (900-2 1/2)	NA

MIRL Rwy 16-34