

(YMONT1.YMONT) 26022

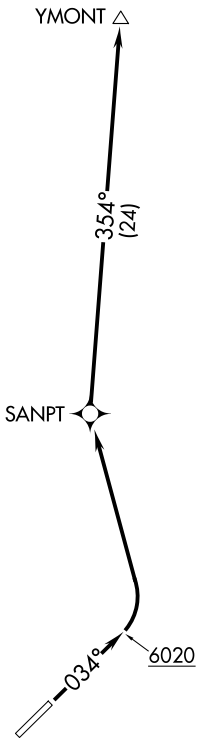
AL-10960 (FAA)

SANPETE COUNTY RGNL (41U)
MANTI, UTAH

YMONT ONE DEPARTURE (OBSTACLE) (RNAV)

AWOS-3PT
120.025
SALT LAKE CENTER
133.6 296.25
CTAF
122.8

**TOP ALTITUDE:
ASSIGNED BY ATC**



NOTE: RNAV-1.
NOTE: GPS required.

TAKEOFF MINIMUMS

Rwy 3: Standard with minimum climb of 340' per NM to 7000.

TAKEOFF OBSTACLE NOTES

- Rwy 3: Rising terrain 7' from DER, left and right of centerline, up to 5517' MSL.
- Rising terrain 48' from DER, 324' right of centerline, 5522' MSL.
- Vehicles on road beginning 115' from DER, 522' left of centerline, up to 5526' MSL.
- Vehicles on road and rising terrain beginning 122' from DER, 212' right of centerline, up to 5539' MSL.
- Vehicles on road beginning 169' from DER, 24' left of centerline, up to 5537' MSL.
- Vehicles on road and rising terrain beginning 225' from DER, 273' right of centerline, up to 5543' MSL.
- Trees, bushes, poles and vehicles on road beginning 552' from DER, 40' right of centerline, up to 39' AGL/5568' MSL.
- Pole 1710' from DER, 630' right of centerline, 5573' MSL.
- Communication tower 1.9 NM from DER, 3176' right of centerline, 124' AGL/5851' MSL.
- Pole 2 NM from DER, 3612' right of centerline, 5854' MSL.
- Pole 2.1 NM from DER, 3970' right of centerline, 30' AGL/5900' MSL.

NOTE: Chart not to scale.

DEPARTURE ROUTE DESCRIPTION

TAKEOFF RUNWAY 3: Climb heading 034° to 6020 then climbing left turn to 13000 direct SANPT then on track 354° to YMONT.

YMONT ONE DEPARTURE (OBSTACLE) (RNAV)
(YMONT1.YMONT) 22JUN17

MANTI, UTAH
SANPETE COUNTY RGNL (41U)

SW-4, 14 MAY 2026 to 11 JUN 2026

SW-4, 14 MAY 2026 to 11 JUN 2026