

WAAS CH <b>82631</b> <b>W26A</b>	APP CRS <b>264°</b>	Rwy Ldg <b>2782</b> TDZE <b>937</b> Apt Elev <b>937</b>
--	------------------------	---

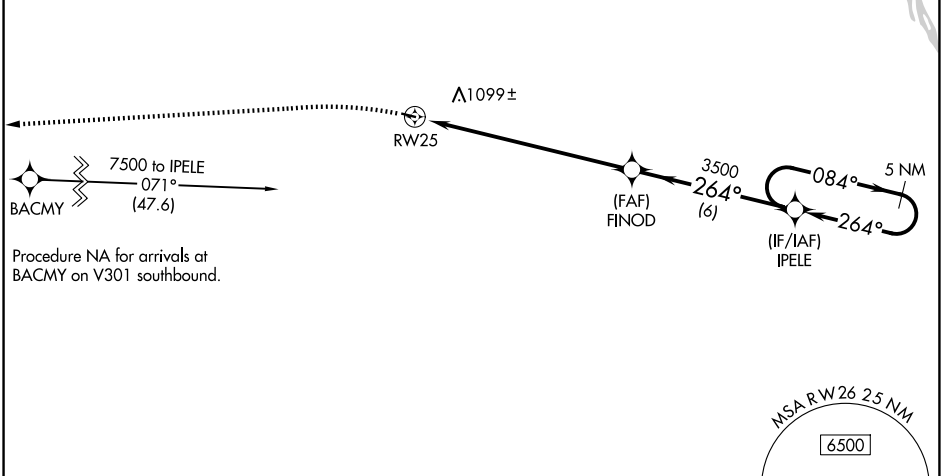
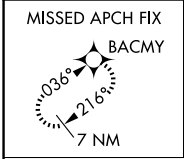
# RNAV (GPS) RWY 26

CENTRAL (CEM) (PACE)

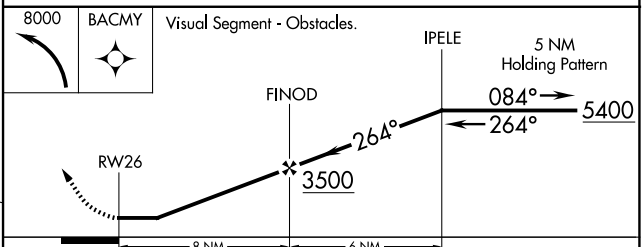
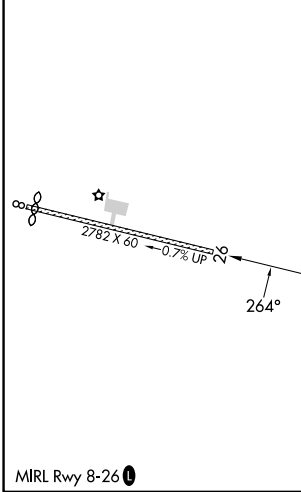
**NA** DME/DME RNP-0.3 NA. Use Fort Yukon altimeter setting; when not received, procedure NA. Helicopter visibility reduction below ¼ SM NA. Night Landing: Rwy 8 NA.

MISSED APPROACH: Climbing left turn to 8000 direct BACMY and hold.

FYU/PFYU AWOS-3P <b>125.8</b>	ANCHORAGE CENTER <b>135.0 284.7</b>	CTAF <b>122.9</b>
----------------------------------	--	----------------------



ELEV 937	TDZE 937
----------	----------



CATEGORY	A	B	C	D
LP MDA	2440-1¼ 1503 (1600-1¼)	2440-1½ 1503 (1600-1½)		NA
LNAV MDA	2900-1¼ 1963 (2000-1¼)	2900-1½ 1963 (2000-1½)		NA
CIRCLING	2900-1¼ 1963 (2000-1¼)	2900-1½ 1963 (2000-1½)		NA

AK, 14 MAY 2026 to 09 JUL 2026

AK, 14 MAY 2026 to 09 JUL 2026