

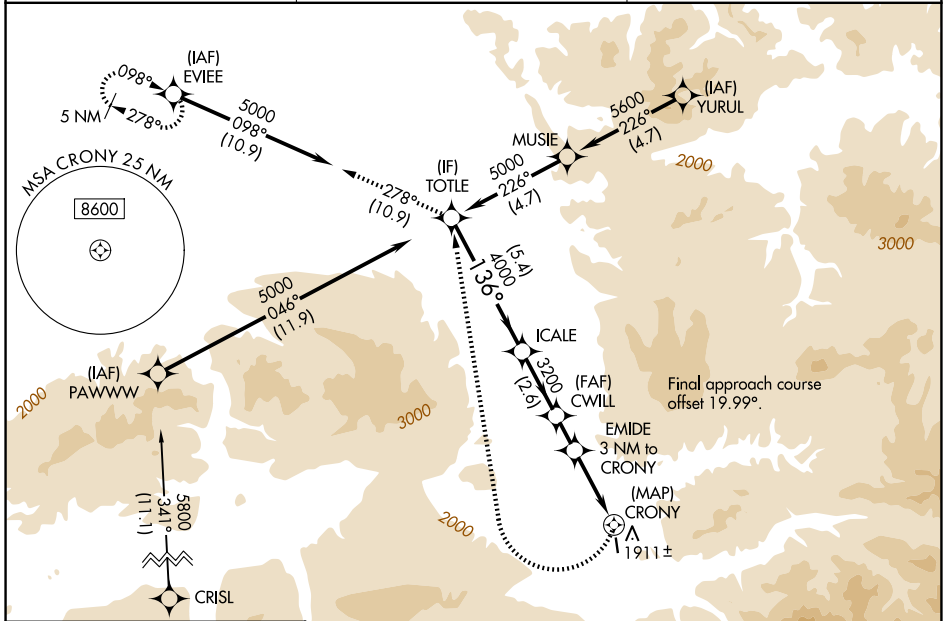
WAAS CH 53539 W15A	APP CRS 136°	Rwy Ldg TDZE Apt Elev	2910 1275 1275
--	------------------------	-----------------------------	---

RNAV (GPS) RWY 15

HEALY RIVER (HRR) (PAHV)

RNP APCH - GPS.	MISSED APPROACH: Climbing right turn to 5800 direct TOTLE and on track 278° to EVIEE and hold.
<p>▼ Circling NA northeast of Rwy 15-33. Procedure NA at night. Use</p> <p>▲ NA McKinley Park altimeter setting; when not received, procedure</p> <p>⊗ -14°C NA. Rwy 15 helicopter visibility reduction below 1 SM NA.</p>	*Missed approach requires minimum climb of 340 feet per NM to 3100.

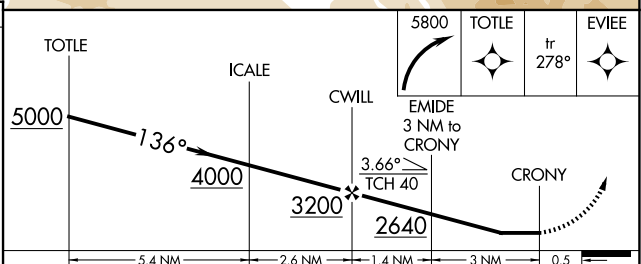
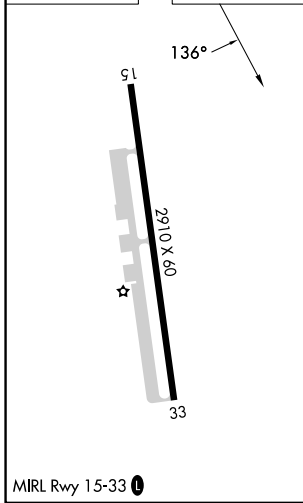
INR/PAIN AWOS-3P 135.75	ANCHORAGE CENTER 120.9 319.2	CTAF 122.90
-----------------------------------	--	-----------------------



AK, 14 MAY 2026 to 09 JUL 2026

AK, 14 MAY 2026 to 09 JUL 2026

ELEV 1275	TDZE 1275
-----------	-----------



CATEGORY	A	B	C	D
LP MDA*	2100-1 825 (900-1)	2100-1¼ 825 (900-1¼)		NA
LP MDA	2240-1¼ 965 (1000-1¼)	2240-1½ 965 (1000-1½)		NA
LNAV MDA*	2260-1¼ 985 (1000-1¼)	2260-1½ 985 (1000-1½)		NA
LNAV MDA	2560-1¼ 1285 (1300-1¼)	2560-1½ 1285 (1300-1½)		NA
CIRCLING	2560-1¼ 1285 (1300-1¼)	2560-1½ 1285 (1300-1½)		NA