

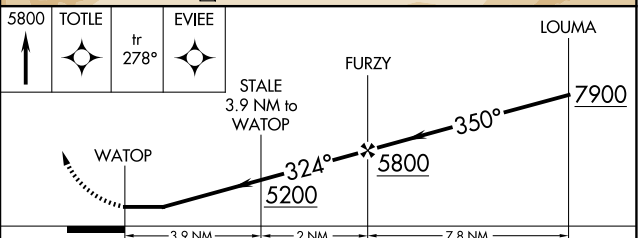
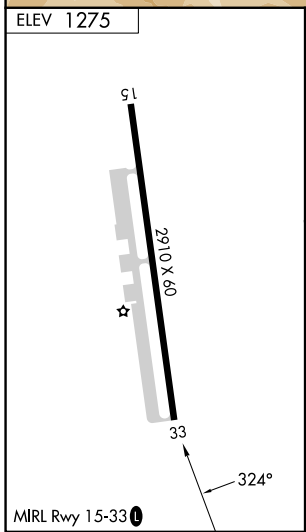
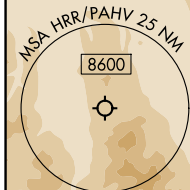
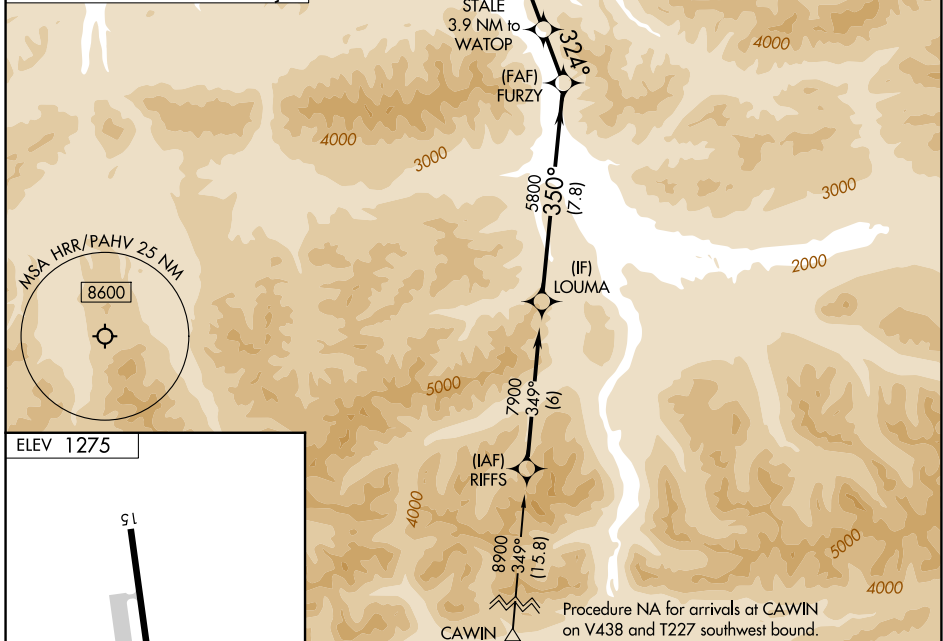
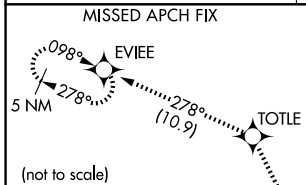
APP CRS 324°	Rwy Ldg TDZE Apt Elev	N/A N/A 1275
------------------------	-----------------------------	---

RNAV (GPS)-A

HEALY RIVER (HRR) (PAHV)

RNP APCH - GPS.	Procedure NA at night. Rwy 15 and 33 helicopter visibility reduction below 1 SM NA. Use McKinley Park altimeter setting; when not received, procedure NA.	MISSED APPROACH: Climb to 5800 direct TOTLE and on track 278° to EVIEE and hold.
-----------------	---	--

INR/PAIN AWOS-3P 135.75	ANCHORAGE CENTER 120.9 319.2	CTAF 122.9
-----------------------------------	--	----------------------



CATEGORY	A	B	C	D
CIRCLING	3640-1¼ 2365 (2400-1¼)	3640-1½ 2365 (2400-1½)	3720-3 2445 (2500-3)	NA

AK, 14 MAY 2026 to 09 JUL 2026

AK, 14 MAY 2026 to 09 JUL 2026