

APP CRS	Rwy Ldg	3998
291°	TDZE	100
	Apt Elev	100

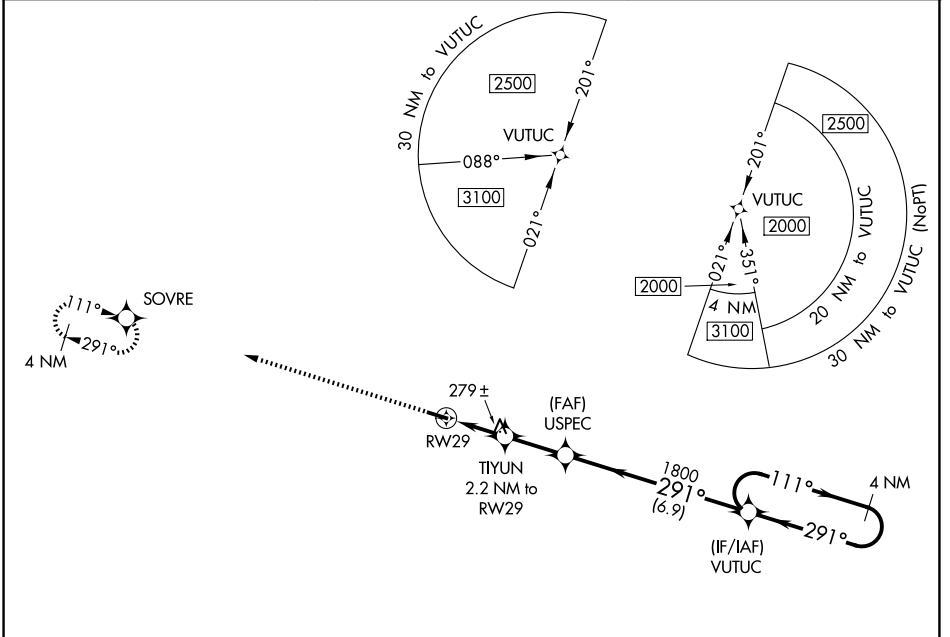
RNAV (GPS) RWY 29

GENEVA MUNI (33J)

NA DME/DME RNP-0.3 NA. Procedure NA at night. Use Cairns AAF altimeter setting, when not received, use Dothan altimeter setting and increase all MDA 40 feet, and increase all Cat C visibilities ¼ SM. Rwy 29 helicopter visibility reduction below 1 SM NA.

MISSED APPROACH: Climb to 2000 direct SOVRE and hold.

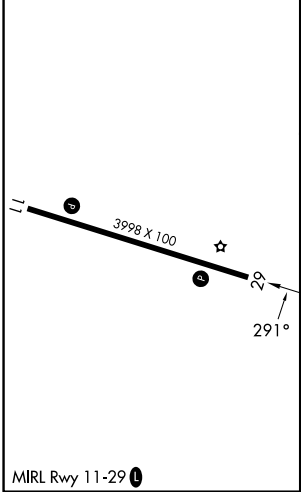
KOZR ATIS 111.2 316.15	CAIRNS APP CON ★ 133.75 270.35	UNICOM 122.8 (CTAF) 0
----------------------------------	------------------------------------------	---------------------------------



SE-4, 14 MAY 2026 to 11 JUN 2026

SE-4, 14 MAY 2026 to 11 JUN 2026

ELEV 100	TDZE 100
----------	----------



	2000	SOVRE						
			TIYUN 2.2 NM to RWY 29	USPEC	VUTUC	4 NM Holding Pattern		
			960	1800	2000			
			2.2 NM	2.3 NM	6.9 NM			
CATEGORY	A	B	C	D				
LNAV MDA	600-1	500 (500-1)	600-1 3/8 500 (500-1 3/8)	NA				
CIRCLING	700-1 600 (600-1)	720-1 620 (700-1)	900-2 1/4 800 (800-2 1/4)	NA				