

WAAS CH <b>77538</b> <b>W22A</b>	APP CRS <b>224°</b>	Rwy Ldg TDZE Apt Elev	<b>5500</b> <b>276</b> <b>276</b>
--	------------------------	-----------------------------	---

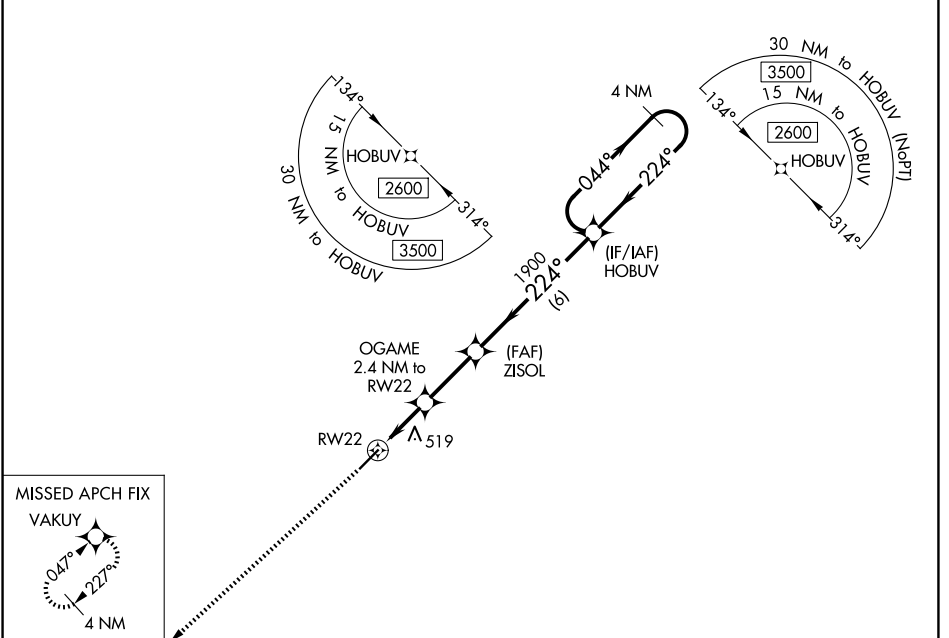
# RNAV (GPS) RWY 22

CONWAY RGNL (CXW)

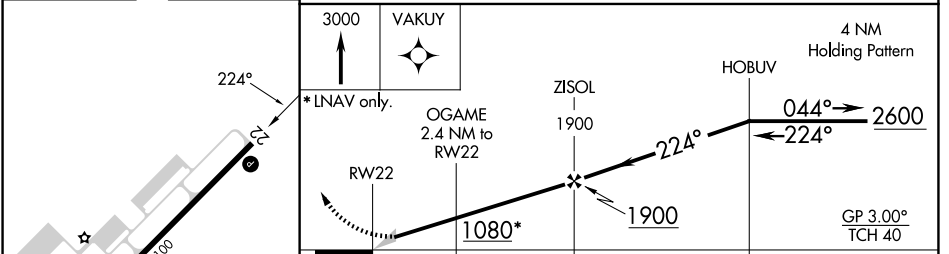
**Baro-VNAV NA.**  
**NA** Use Bill and Hillary Clinton National/Adams Field altimeter setting; when not received, procedure NA.  
 DME/DME RNP-0.3 NA.

MISSED APPROACH: Climb to 3000 direct VAKUY and hold.

AWOS-2 <b>118.775</b>	LITTLE ROCK APP CON <b>135.4 353.6</b> (040°-239°) <b>119.5 306.2</b> (240°-039°)	CLNC DEL <b>121.2</b>	UNICOM <b>123.05</b> (CTAF) <b>1</b>
--------------------------	---	--------------------------	---



ELEV 276	TDZE 276
----------	----------



	3000	VAKUY		4 NM Holding Pattern
	*LNAV only.	OGAME 2.4 NM to RW22	ZISOL 1900	HOBUV
		1080*	1900	2600
		2.4 NM	2.6 NM	6 NM
CATEGORY	A	B	C	D
LPV DA		533-7/8	257 (300-7/8)	
LNAV/VNAV DA		853-2	577 (600-2)	
LNAV MDA	780-1	504 (600-1)	780-1 3/8	504 (600-1 3/8)
CIRCLING	1000-1	724 (800-1)	1000-2 724 (800-2)	1380-3 1104 (1200-3)

GP 3.00°  
TCH 40

REIL Rwy 4 and 22 **1**  
 MIRL Rwy 4-22 **1**

SC-1, 14 MAY 2026 to 11 JUN 2026

SC-1, 14 MAY 2026 to 11 JUN 2026