

APP CRS	Rwy Idg	4001
187°	TDZE	626
	Apt Elev	626

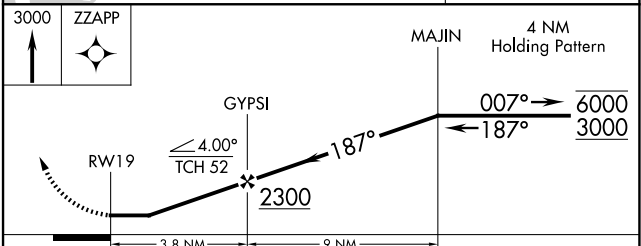
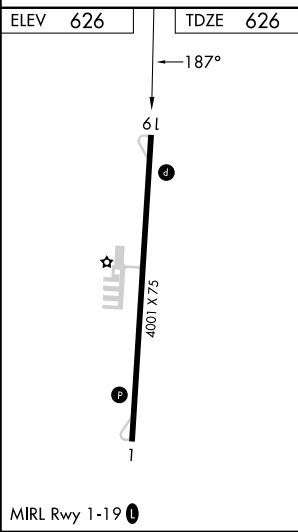
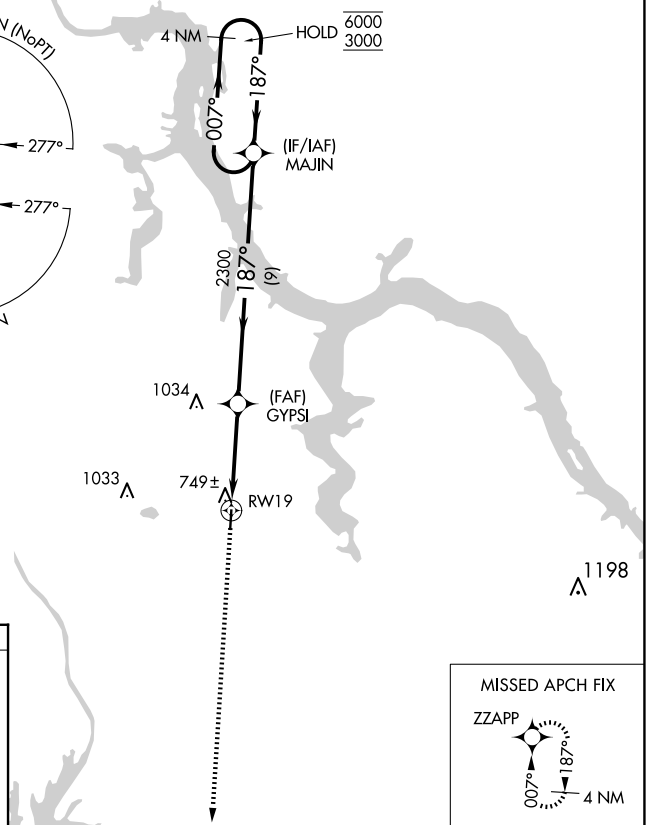
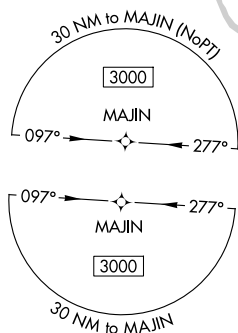
RNAV (GPS) RWY 19

SEGARS FLD (15M)

RNP APCH-GPS.
 Procedure NA at night. Rwy 19 helicopter visibility reduction below 1 SM NA.
 Use Muscle Shoals altimeter setting.

MISSED APPROACH: Climb to 3000 direct ZZAPP and hold.

AWOS-3PT 119.250	MSL ASOS 119.425	MEMPHIS CENTER 124.35 318.1	CTAF 122.9
----------------------------	----------------------------	---------------------------------------	----------------------



CATEGORY	A	B	C	D
LNAV MDA	1080-1	454 (500-1)	NA	

SC-4, 14 MAY 2026 to 11 JUN 2026

SC-4, 14 MAY 2026 to 11 JUN 2026