

WAAS CH 81839 W13A	APP CRS 133°	Rwy Ldg TDZE Apt Elev	5701 2948 2965
--	------------------------	-----------------------------	---

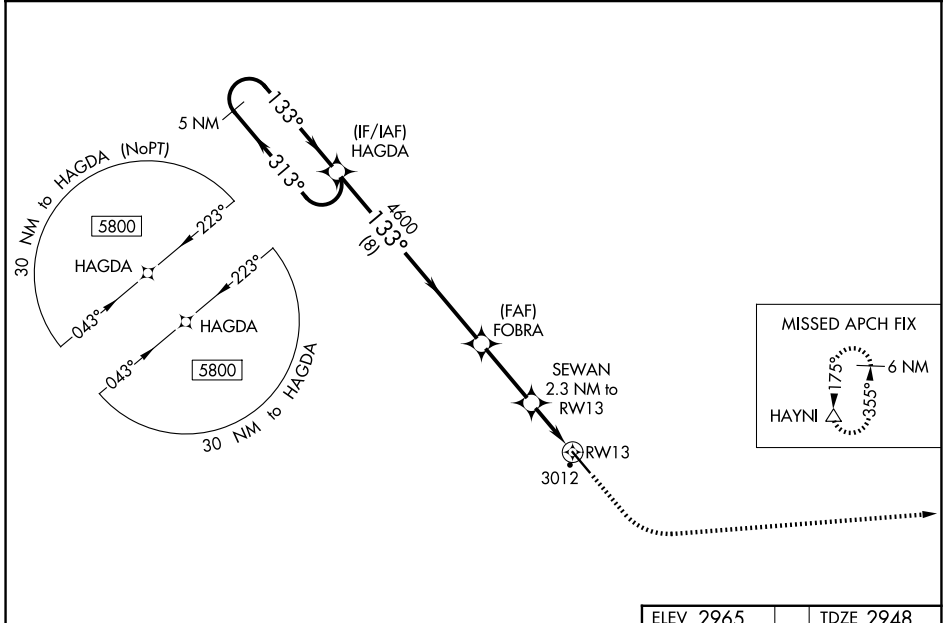
RNAV (GPS) RWY 13

BOWMAN RGNL (BWW)

⚠ For uncompensated Baro-VNAV systems, LNAV/VNAV NA below -20°C (-4°F) or above 54°C (130°F). DME/DME RNP-0.3 NA. When local altimeter setting not received, use Hettinger altimeter setting and increase all DA 102 feet, and all MDA 120 feet; increase LPV and LNAV/VNAV visibility ¼ mile all Cats, and LNAV Cat C visibility ⅓ mile. Baro-VNAV and VDP NA when using Hettinger altimeter setting.

MISSED APPROACH: Climb to 3400 then climbing left turn to 6000 direct HAYNI and hold.

AWOS-3PT 118.075	SALT LAKE CITY CENTER 126.85 305.2	UNICOM 122.8 (CTAF) 1
----------------------------	--	---------------------------------



NC-1, 14 MAY 2026 to 11 JUN 2026

NC-1, 14 MAY 2026 to 11 JUN 2026

		ELEV 2965		TDZE 2948	
5 NM Holding Pattern		3400	6000	HAYNI	
HAGDA		FOBRA		*LNAV only	
5800	← 313°	→ 133°	133°		
GP 3.00°	TCH 40	4600	*3700	SEWAN 2.3 NM to RWY 13	
8 NM		2.8 NM	1.4 NM	0.9 NM	
CATEGORY	A	B	C	D	
LPV DA	3198-1		250 (300-1)		
LNAV/VNAV DA	3198-1		250 (300-1)		
LNAV MDA	3280-1		332 (400-1)		
CIRCLING	3380-1 415 (500-1)	3420-1 455 (500-1)	3580-1¾ 615 (700-1¾)	3580-2 615 (700-2)	
REIL Rwy 13 and 31 1 MIRL Rwy 13-31 1					