

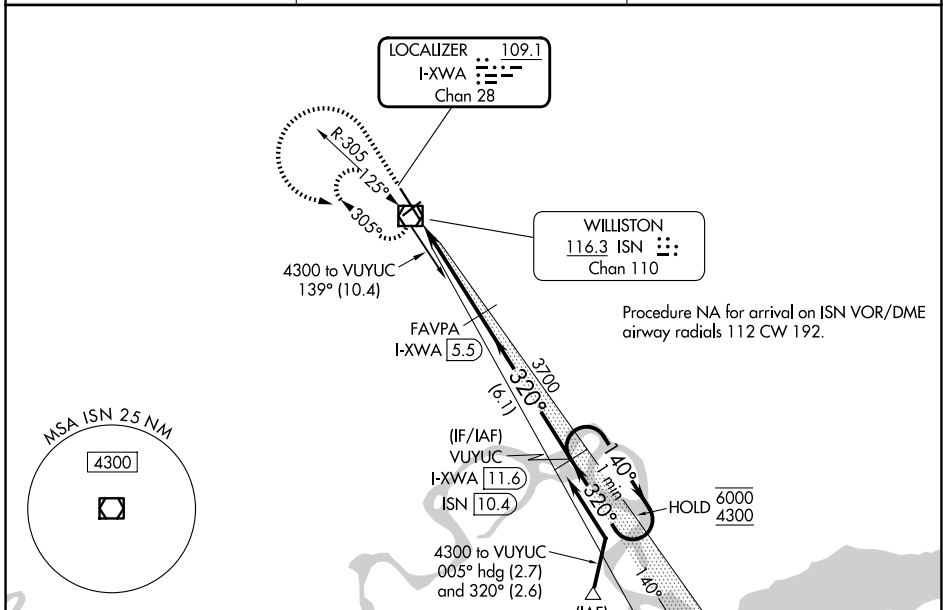
LOC/DME I-XWA 109.1 Chan 28	APP CRS 320°	Rwy Ldg 7503 TDZE 2350 Apt Elev 2353
--	------------------------	---

ILS or LOC RWY 32

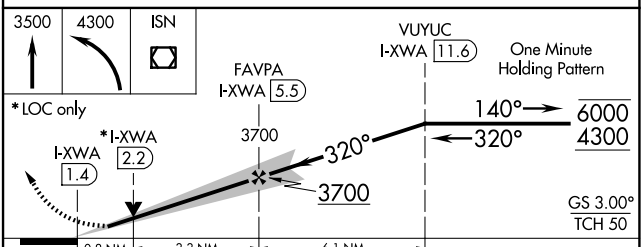
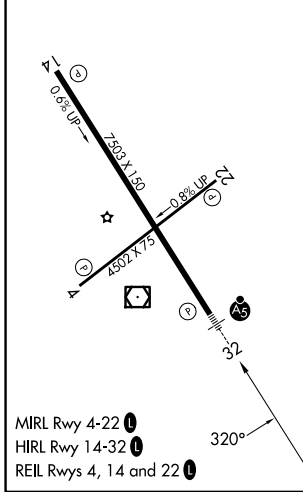
WILLISTON BASIN INTL (XWA)

DME required.		MALSR	MISSED APPROACH: Climb to 3500 then climbing left turn to 4300 direct ISN VOR/DME and hold, continue climb-in-hold to 4300.
▼ ▲ NA	For inop ALS, increase S-LOC 32 Cat C/D visibility to ½ SM.		

ASOS 125.925	SALT LAKE CITY CENTER 126.85 305.2	UNICOM 122.8 (CTAF) ①
------------------------	--	---------------------------------



ELEV 2353	D	TDZE 2350
-----------	----------	-----------



CATEGORY	A	B	C	D
S-ILS 32	2550-½		200 (200-½)	
S-LOC 32	2660-½		310 (400-½)	
CIRCLING	2760-1	2820-1	2820-1½	2920-2
	407 (500-1)	467 (500-1)	467 (500-1½)	567 (600-2)

NC-1, 14 MAY 2026 to 11 JUN 2026

NC-1, 14 MAY 2026 to 11 JUN 2026