

(HUDSN1.YOMAN) 26134

AL-11235 (FAA)

DOWNTOWN MANHATTAN/WALL ST(JRB)

# HUDSN ONE DEPARTURE (COPTER) (RNAV)

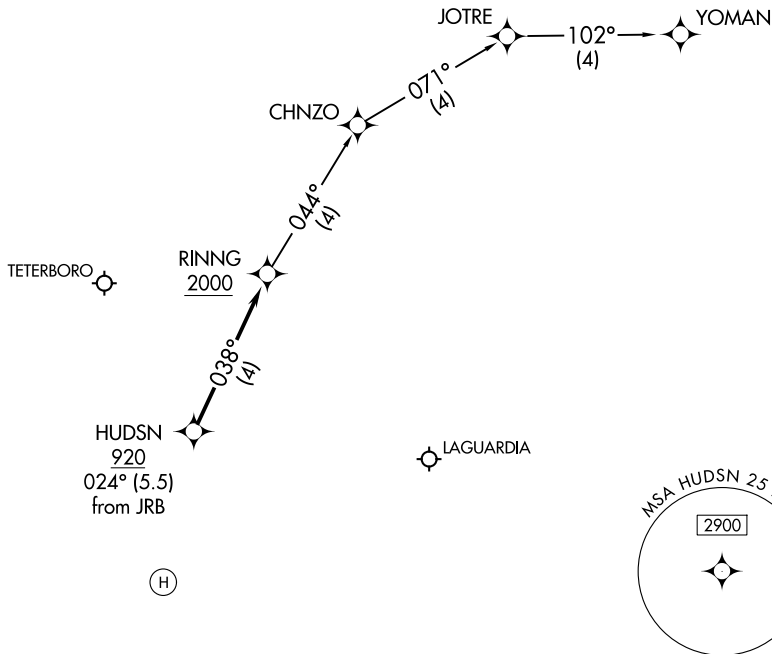
NEW YORK, NEW YORK

NEW YORK DEP CON  
120.8 322.35  
LGA ASOS  
127.05  
LAGUARDIA TOWER  
126.05

RNAV 1 - GPS.

RADAR required.

**TOP ALTITUDE:  
2000**



NOTE: Use LaGuardia altimeter setting; when not received, procedure NA.

NOTE: Prior to departure, contact LaGuardia Tower for clearance and release.

NOTE: Chart not to scale.

## DEPARTURE ROUTE DESCRIPTION

VFR SEGMENT: VFR climb to HUDSN, cross HUDSN at or above 920.

IFR SEGMENT: From HUDSN, climb on track 038° to RINNG, cross RINNG at or above 2000, then on depicted route.

# HUDSN ONE DEPARTURE (COPTER) (RNAV)

NEW YORK, NEW YORK

(HUDSN1.YOMAN) 20FEB25

DOWNTOWN MANHATTAN/WALL ST(JRB)

NE-2, 14 MAY 2026 to 11 JUN 2026

NE-2, 14 MAY 2026 to 11 JUN 2026