

WAAS CH <b>82242</b> <b>W17A</b>	APP CRS <b>173°</b>	Rwy Ldg TDZE Apt Elev	<b>5500</b> <b>1409</b> <b>1409</b>
--	------------------------	-----------------------------	---

# RNAV (GPS) RWY 17

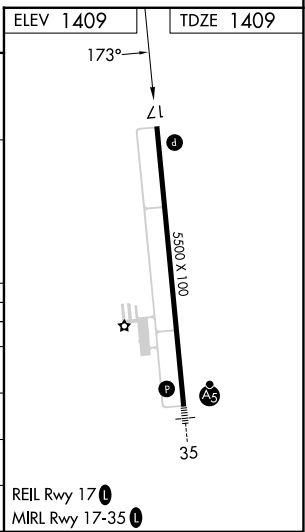
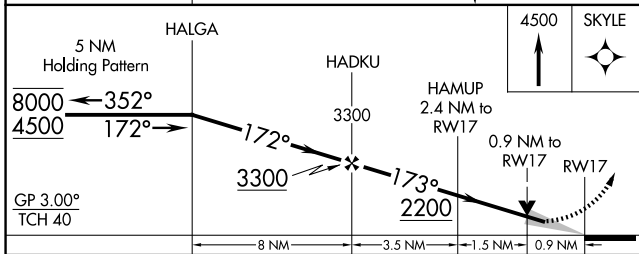
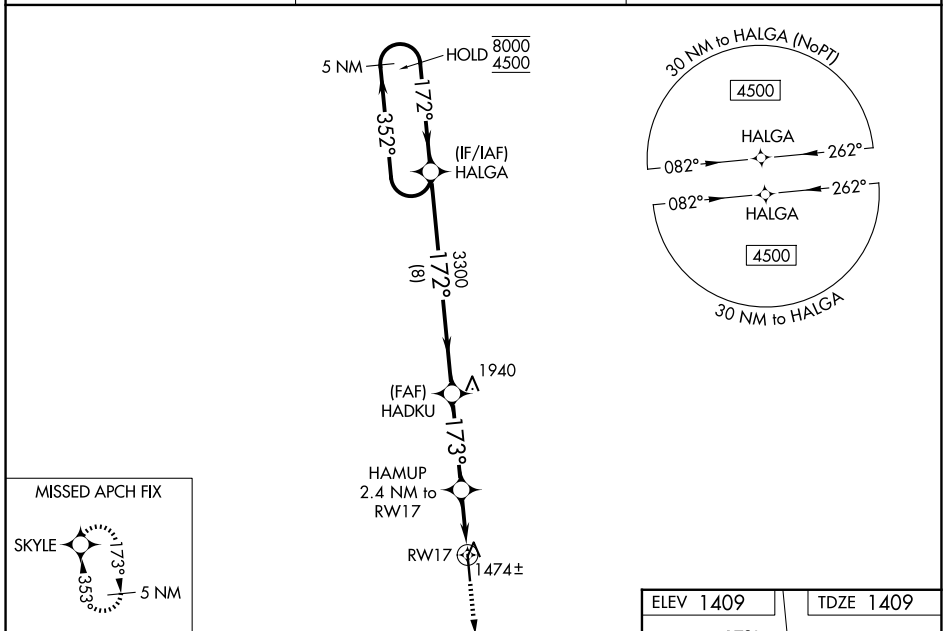
SIoux COUNTY RGNL (SXX)

RNP APCH - GPS.

**⚠** Baro-VNAV and VDP NA when using LRJ altimeter setting. For uncompensated Baro-VNAV systems, LNAV/VNAV NA below -17°C or above 54°C. When local altimeter setting not received, use LRJ altimeter setting and increase: LPV and LNAV/VNAV DA to 1718 feet and all visibilities 1/8 SM; increase all MDAs 60 feet and LNAV visibility Cat C/D 1/8 SM.

MISSED APPROACH: Climb to 4500 direct SKYLE and hold, continue climb-in-hold to 4500.

AWOS-3P <b>120.075</b>	SIoux CITY APP CON * <b>124.6 307.0</b>	UNICOM <b>122.7 (CTAF)</b>
---------------------------	--	-------------------------------



CATEGORY	A	B	C	D
LPV DA		1659-3/4	250 (300-3/4)	
LNAV/VNAV DA		1659-3/4	250 (300-3/4)	
LNAV MDA		1740-1	331 (400-1)	
CIRCLING	1820-1 411 (500-1)	2080-1 671 (700-1)	2080-2 671 (700-2)	2080-2 1/4 671 (700-2 1/4)

NC-3, 14 MAY 2026 to 11 JUN 2026

NC-3, 14 MAY 2026 to 11 JUN 2026