

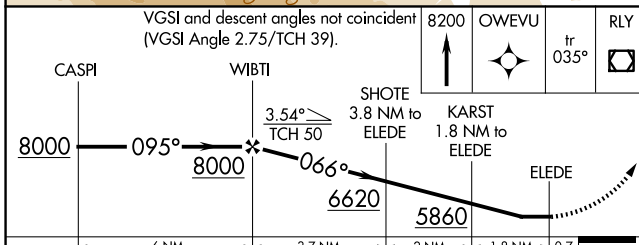
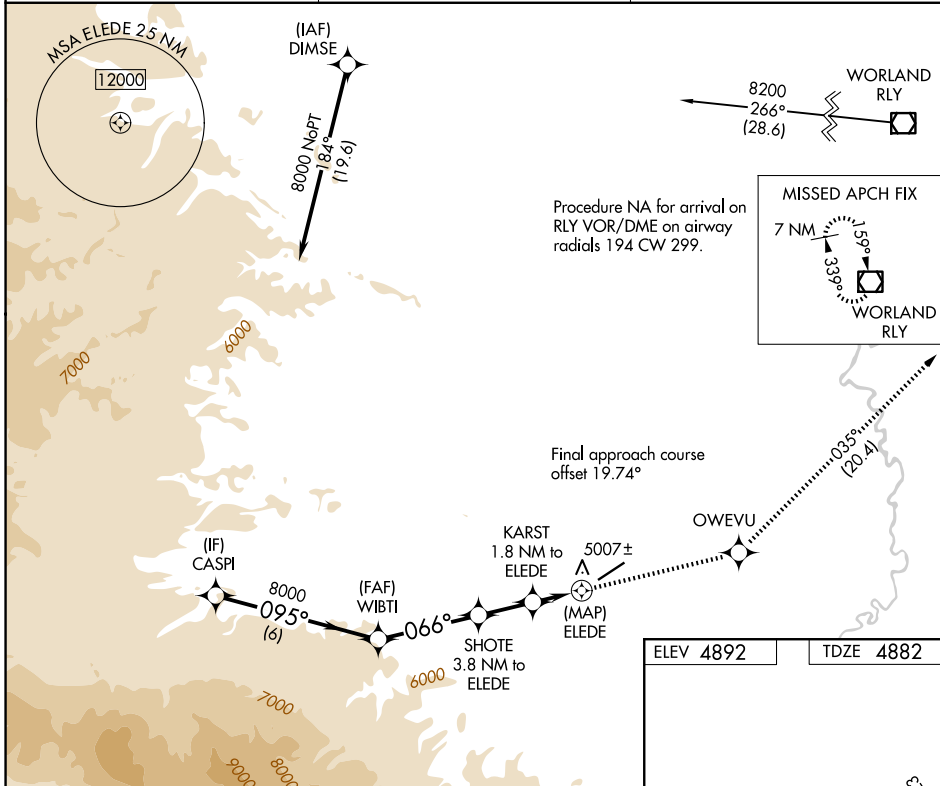
APP CRS	Rwy Ldg	6370
066°	TDZE	4882
	Apt Elev	4892

RNAV (GPS) RWY 5

HOT SPRINGS COUNTY (HSG)

<p>⚠ Circling NA northwest of Rwy 5-23. ⚠ DME/DME RNP-0.3 NA. Rwy 5 helicopter visibility reduction below 3/4 SM NA.</p>	<p>MISSED APPROACH: Climb to 8200 direct OWEVU and on track 035° to RLY VOR/DME and hold.</p>
--	---

<p>AWOS-3PT 121.125</p>	<p>SALT LAKE CENTER 133.25 285.6</p>	<p>UNICOM 122.8 (CTAF) 0</p>
------------------------------------	---	---



ELEV 4892	TDZE 4882
-----------	-----------

<p>VGSI and descent angles not coincident (VGSI Angle 2.75/TCH 39).</p>	<p>8200 OWEVU tr RLY 035°</p>
<p>CASPI</p>	<p>WIBTI</p>
<p>8000</p>	<p>8000</p>
<p>095°</p>	<p>066°</p>
<p>6 NM</p>	<p>3.7 NM</p>
<p>2 NM</p>	<p>1.8 NM</p>
<p>0.7 NM</p>	<p>0.7 NM</p>
<p>SHOTE 3.8 NM to ELEDE</p>	<p>KARST 1.8 NM to ELEDE</p>
<p>6620</p>	<p>5860</p>
<p>8000</p>	<p>5007±</p>
<p>066°</p>	<p>035°</p>
<p>066°</p>	<p>066°</p>
<p>0.3% UP</p>	<p>6370 X.75</p>
<p>066°</p>	<p>066°</p>

CATEGORY	A	B	C	D
LNVA MDA	5240-1 358 (400-1)			NA
CIRCLING	5320-1 428 (500-1)	5540-1 648 (700-1)	5580-2 688 (700-2)	5880-3 988 (1000-2)

REIL Rwys 5 and 23 0	MIRL Rwy 5-23 0
----------------------	-----------------

NW-1, 14 MAY 2026 to 11 JUN 2026

NW-1, 14 MAY 2026 to 11 JUN 2026