

APP CRS <b>126°</b>	Rwy Ldg TDZE Apt Elev <b>462</b>	<b>N/A</b> <b>N/A</b> <b>462</b>
------------------------	---	--

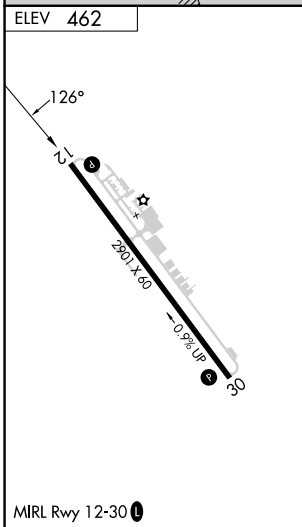
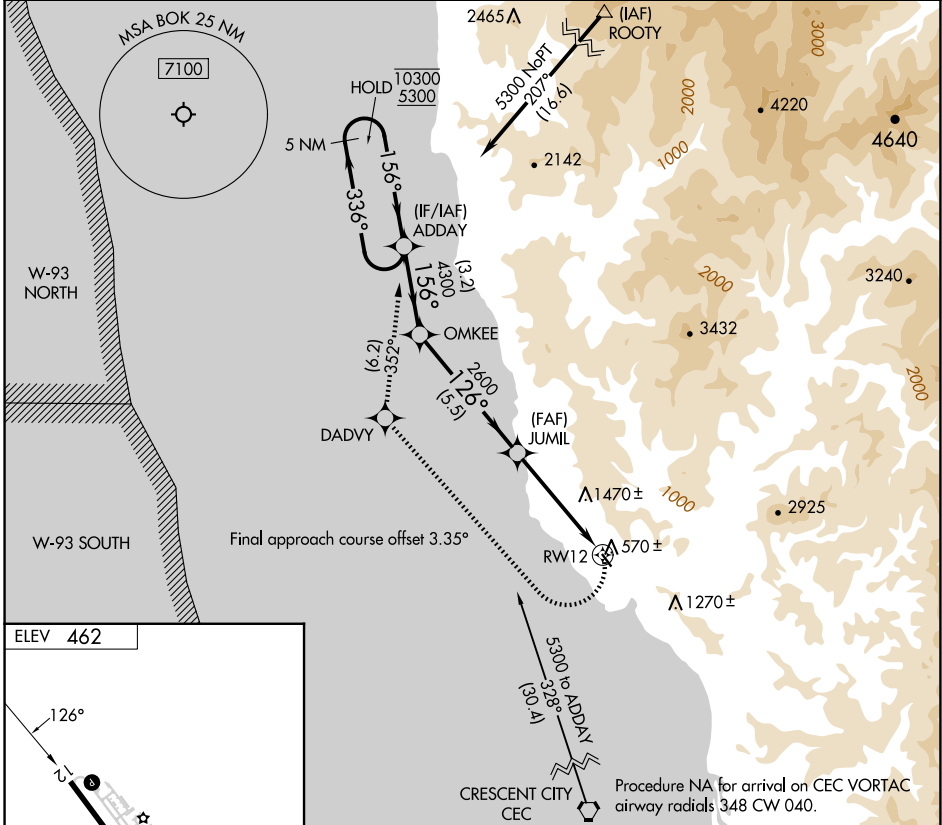
# RNAV (GPS)-A

BROOKINGS (BOK)

RNP APCH - GPS.  
 Procedure NA at night. Circling NA northeast of Rwy 12-30.  
 Rwy 12 and 30 helicopter visibility reduction below 1 SM NA.

MISSED APPROACH: Climbing right turn to 5300 direct DADVY, and on track 352° to ADDAY and hold, continue climb in hold to 5300.

AWOS-3PT <b>132.025</b>	SEATTLE CENTER <b>124.85 306.3</b>	UNICOM <b>122.8 (CTAF)</b>
----------------------------	---------------------------------------	-------------------------------



	5 NM Holding Pattern ADDAY	OMKEE	JUMIL	RWY 12
	10300 5300	4300	2600	
	← 336°	→ 156°	→ 126°	→ 4.15° TCH 40
		3.2 NM	5.5 NM	4.8 NM
CATEGORY	A	B	C	D
CIRCLING	1600-1¼ 1138 (1200-1¼)	1600-1½ 1138 (1200-1½)	NA	

NW-1, 14 MAY 2026 to 11 JUN 2026

NW-1, 14 MAY 2026 to 11 JUN 2026