

COPTER RNAV (GPS) 185

(USA)

WEIDE AHP (ABERDEEN PROVING GROUND) (KEDG)

APCH CRS	Rwy Idg	1625
185°	TDZE	21
	Arprt Elev	21

RNP APCH - GPS	MISSED APPROACH: Climbing left turn to 2500 direct JIRET and hold.
----------------	--

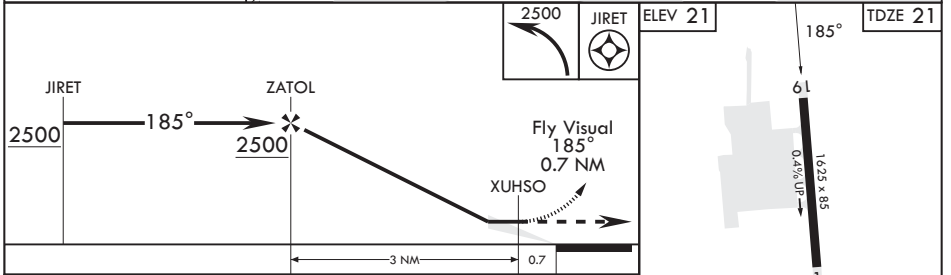
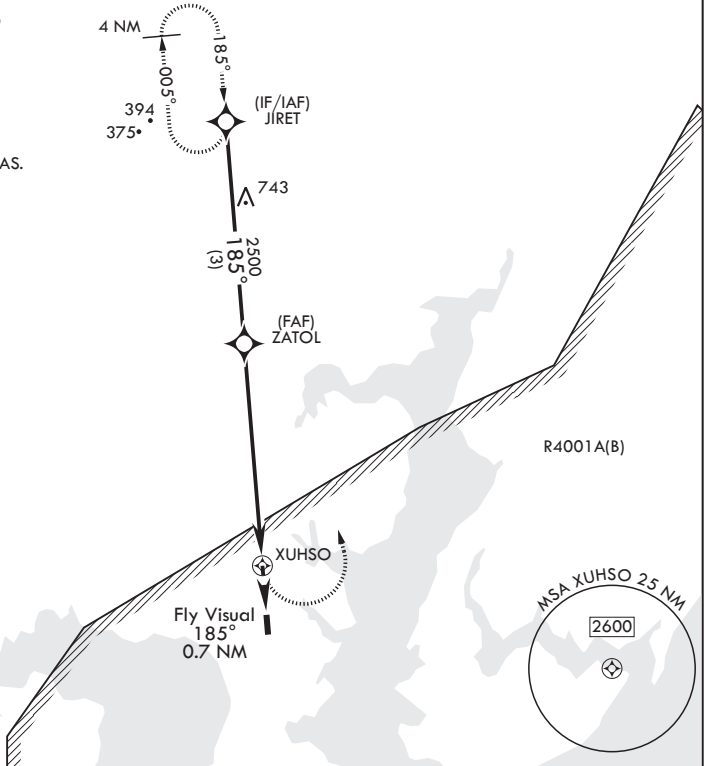
AWOS-AV 126.2 (CTAF)	POTOMAC APP CON/DEP CON 125.525 291.625
-------------------------	--

Proceed VFR from XUHSO or conduct the specified missed approach.

For VFR missed approach exit restricted area to north expeditiously.

Limit all segments to 80 KIAS.

Use Phillips AAF altimeter setting.



CATEGORY	COPTER			MIRL all rwys
LNAV MDA	720-1	699	(700-1)	

COPTER RNAV (GPS) 185

NE-3, 14 MAY 2026 to 11 JUN 2026

NE-3, 14 MAY 2026 to 11 JUN 2026