

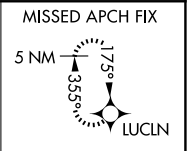
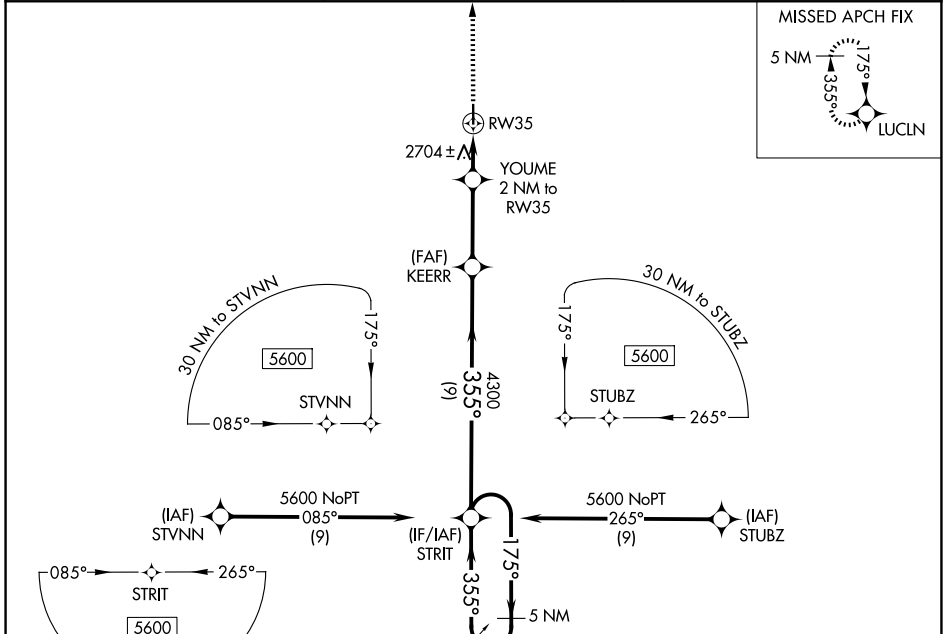
WAAS CH 42644 W35A	APP CRS 355°	Rwy Ldg 4000 TDZE 2631 Apt Elev 2637
--	------------------------	---

RNAV (GPS) RWY 35

GOVE COUNTY (1QK)

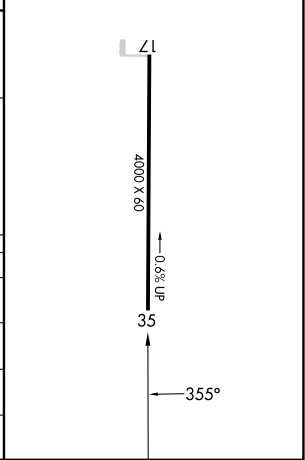
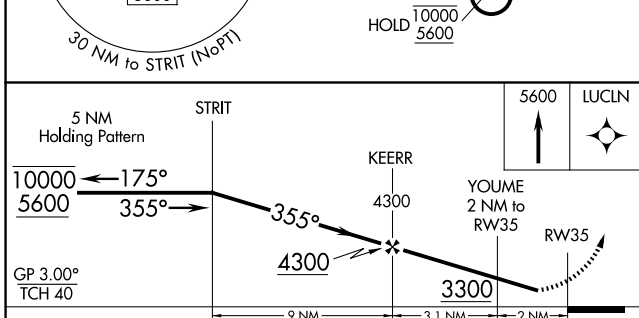
RNP APCH-GPS.	MISSED APPROACH: Climb to 5600 direct LUCLN and hold.
<p>V Rwy 35 helicopter visibility reduction below 3/4 SM NA.</p> <p>A NA Baro-VNAV NA. Use Hill City altimeter setting.</p>	

HLC ASOS 118.425	DENVER CENTER 132.7 226.675	CTAF 122.90
----------------------------	---------------------------------------	-----------------------



ELEV 2637	TDZE 2631
-----------	-----------

MIRL Rwy 17-35 **0**



CATEGORY	A	B	C	D
LPV DA	3001-1	370 (400-1)		NA
LNAV/VNAV DA	3001-1	370 (400-1)		NA
LNAV MDA	3080-1	449 (500-1)		NA
CIRCLING	3340-1 703 (800-1)	3400-1 763 (800-1)		NA

NC-2, 14 MAY 2026 to 11 JUN 2026

NC-2, 14 MAY 2026 to 11 JUN 2026