

WAAS CH <b>50347</b> <b>W35A</b>	APP CRS <b>347°</b>	Rwy Ldg TDZE Apt Elev	<b>3500</b> <b>1308</b> <b>1309</b>
--	------------------------	-----------------------------	---

# RNAV (GPS) RWY 35

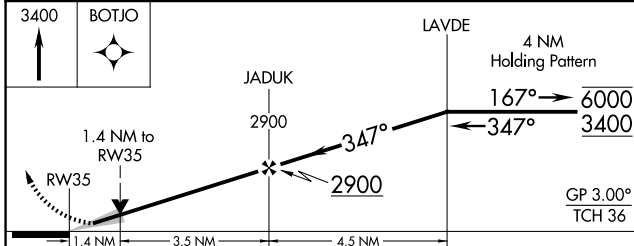
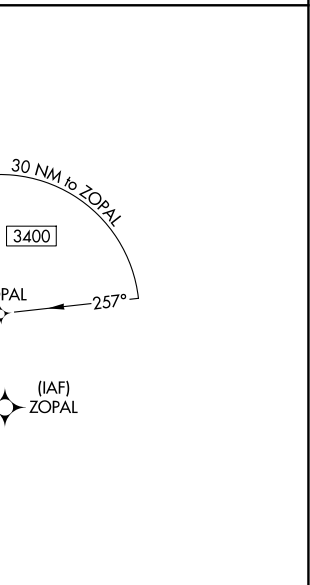
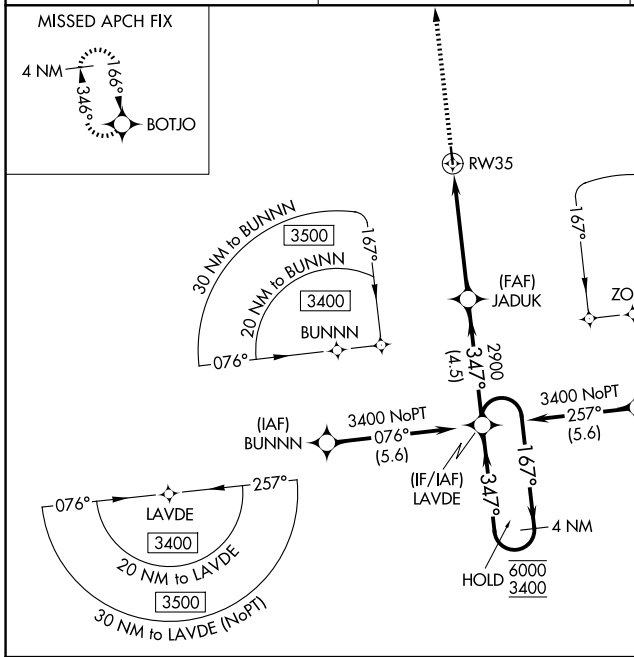
REDFIELD MUNI (1D8)

RNP APCH - GPS.

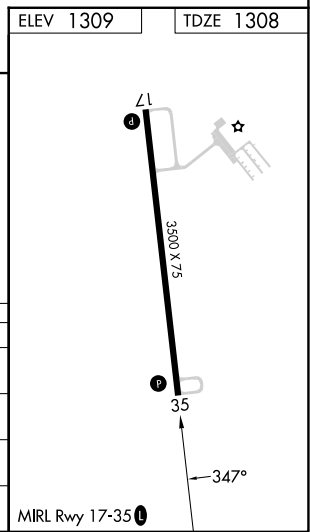
**⚠** Baro-VNAV and VDP NA when using ABR altimeter setting. For uncompensated Baro-VNAV systems, LNAV/VNAV NA below -17°C or above 54°C. When local altimeter not received, use ABR altimeter setting and increase LPV DA to 1694 feet and all visibilities 1/8 SM. Increase LNAV/VNAV DA to 1844 feet and all visibilities 1/8 SM. Increase all MDAs 100 feet.

**MISSED APPROACH:** Climb to 3400 direct BOTJO and hold.

AWOS-3P <b>118.525</b>	MINNEAPOLIS CENTER <b>126.25 339.8</b>	UNICOM <b>122.8 (CTAF) 0</b>
---------------------------	---	---------------------------------



CATEGORY	A	B	C	D
LPV DA	1558-1	250 (300-1)		NA
LNAV/VNAV DA	1760-1 3/8	452 (500-1 3/8)		NA
LNAV MDA	1820-1	492 (500-1)		NA
CIRCLING	1820-1 511 (600-1)	1900-1 591 (600-1)		NA



NC-1, 14 MAY 2026 to 11 JUN 2026

NC-1, 14 MAY 2026 to 11 JUN 2026