

APP CRS	Rwy Ldg	3849
045°	TDZE	281
	Apt Elev	288

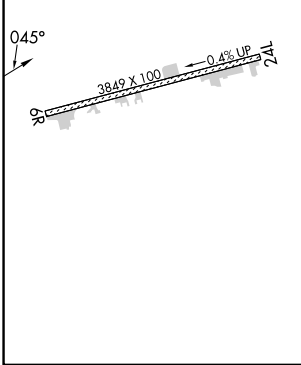
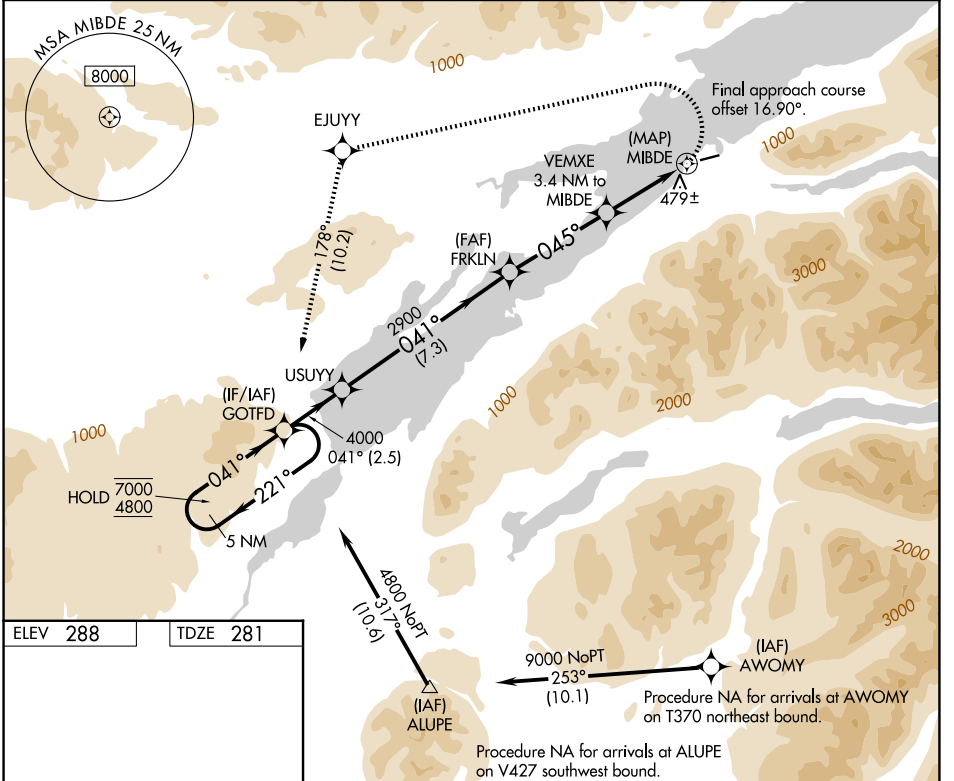
RNAV (GPS) RWY 6R

WILDER RUNWAY (Ø5K)(PAKX)

RNP APCH - GPS.
Procedure NA at night. Rwy 6R helicopter visibility reduction below 1 SM NA. Circling NA south of Rwy 6R-24L.
-18°C

MISSED APPROACH: Climbing left turn to 4800 direct EJUY and on track 178° to GOTFD and hold, continue climb-in-hold to 4800.

AWOS-3P 118.025	ANCHORAGE CENTER 118.8 351.8	CTAF 122.9
---------------------------	----------------------------------------	----------------------



5 NM Holding Pattern	GOTFD	Visual Segment - Obstacles.	4800	EJUY	tr 178°	GOTFD
	USUY					
7000 ← 221°		FRKLN		VEMXE 3.4 NM to MIBDE		MIBDE
4800 → 041°	4000	2900	045°	1580		
	← 2.5 NM	← 7.3 NM	← 4.1 NM	← 3.4 NM	← 0.5 NM	
CATEGORY	A	B	C	D		
LNAV MDA	860-1	579 (600-1)		NA		
CIRCLING	1280-1¼ 992 (1000-1¼)	1980-1½ 1692 (1700-1½)		NA		

AK, 14 MAY 2026 to 09 JUL 2026

AK, 14 MAY 2026 to 09 JUL 2026