

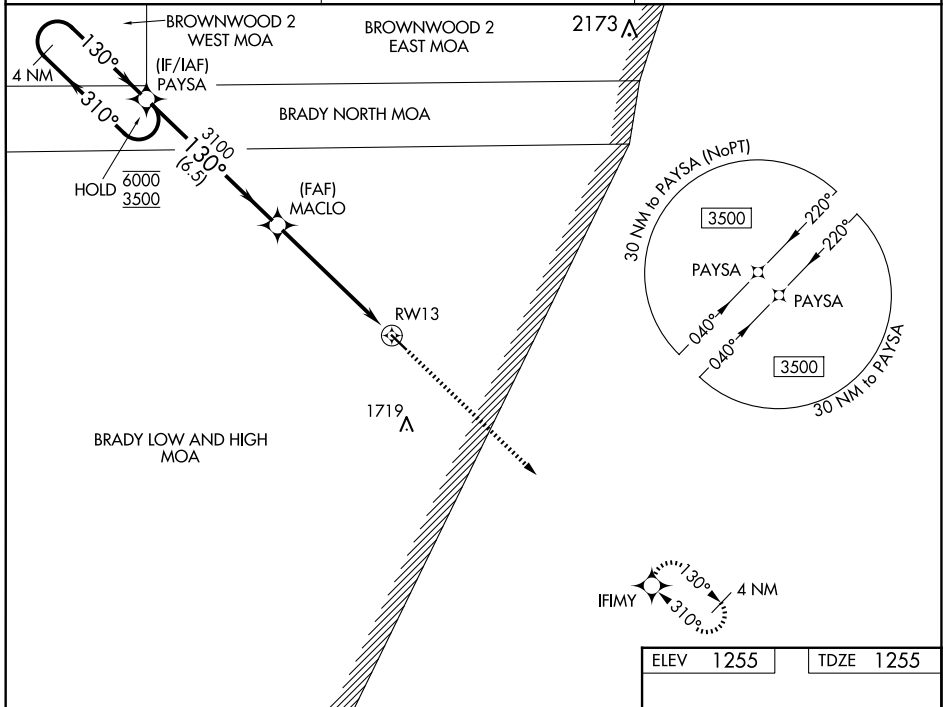
WAAS CH <b>87144</b> <b>W13A</b>	APP CRS <b>130°</b>	Rwy Idg TDZE <b>1255</b> Apt Elev <b>1255</b>	<b>4206</b>
--	------------------------	---	-------------

# RNAV (GPS) RWY 13

SAN SABA COUNTY MUNI (81R)

RNP APCH - GPS.	MISSED APPROACH: Climb to 3500 direct IFIMY and hold.
<p>▼ Rwy 13 helicopter visibility reduction below 3/4 SM NA. For uncompensated Baro-VNAV systems, LNAV/VNAV NA below -17°C or above 54°C.</p>	

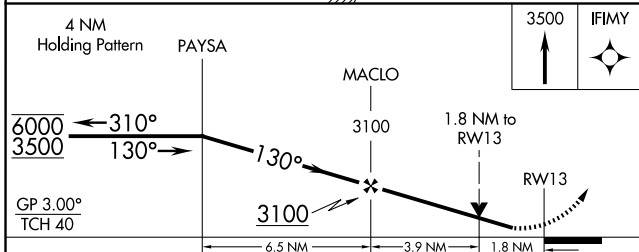
AWOS-3P <b>120.525</b>	HOUSTON CENTER <b>132.35 317.5</b>	UNICOM <b>122.8 (CTAF)</b>
---------------------------	---------------------------------------	-------------------------------



SC-3, 14 MAY 2026 to 11 JUN 2026

SC-3, 14 MAY 2026 to 11 JUN 2026

ELEV	1255	TDZE	1255
------	------	------	------



CATEGORY	A	B	C	D
LPV DA	1505-1	250 (300-1)		NA
LNAV/VNAV DA	1505-1	250 (300-1)		NA
LNAV MDA	1860-1	605 (700-1)		NA
CIRCLING	1860-1	605 (700-1)		NA

