

WAAS CH <b>65648</b> <b>W19A</b>	APP CRS <b>188°</b>	Rwy Ldg TDZE Apt Elev	<b>6100</b> <b>5049</b> <b>5065</b>
--	------------------------	-----------------------------	---

# RNAV (GPS) RWY 19

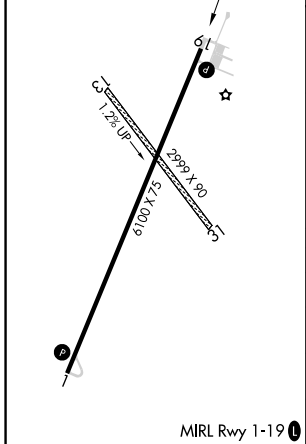
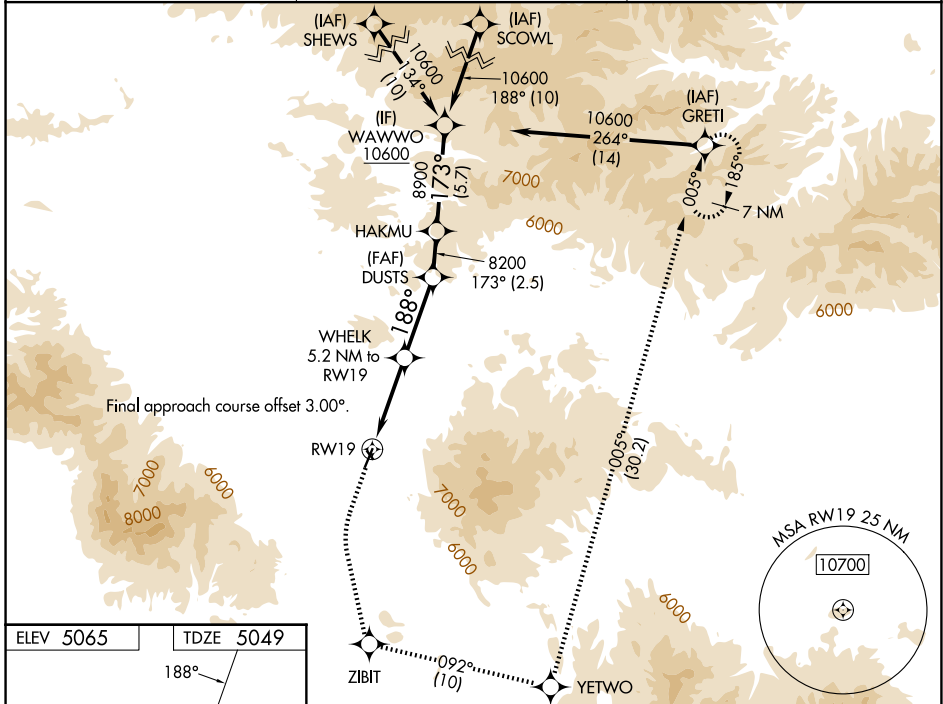
WHITE SULPHUR SPRINGS (7S6)

RNP APCH - GPS.

**⚠** For uncompensated Baro-VNAV systems, LNAV/VNAV NA below -25°C or above 54°C. Rwy 19 helicopter visibility reduction below 3/4 SM NA. Circling NA to Rwys 13 and 31. Circling NA for Cats C and D east of Rwy 1-19. Circling NA for all Cats east of Rwy 1-19 at night.

**MISSED APPROACH:** Climb to 5700 then climbing left turn to 12000 direct ZIBIT then on track 092° to YETWO then on track 005° to GRETI and hold.

AWOS-3PT <b>118.525</b>	SALT LAKE CENTER <b>133.4 285.4</b>	CTAF <b>122.9</b>
----------------------------	--	----------------------



5700	12000	ZIBIT	tr 092°	YETWO	tr 005°	GRETI	HAKMU	WAWWO
		WHELK	DUSTS					
		5.2 NM to RWY 19	8200					
		2.5 NM to RWY 19	188°	8200	173°	10600		
			6740	8200	8900			GP 3.00°
								TCH 35
		2.5 NM	2.7 NM	4.6 NM	2.5 NM	5.7 NM		

CATEGORY	A	B	C	D
LPV DA	5299-1		250 (300-1)	
LNAV/VNAV DA	5706-1 7/8		657 (700-1 7/8)	
LNAV MDA	5880-1 831 (900-1)	5880-1 1/4 831 (900-1 1/4)	5880-2 1/2	831 (900-2 1/2)
CIRCLING	5880-1 1/4 815 (900-1 1/4)	5920-1 1/4 855 (900-1 1/4)	5920-2 1/2 855 (900-2 1/2)	5920-2 3/4 855 (900-2 3/4)

NW-1, 14 MAY 2026 to 11 JUN 2026

NW-1, 14 MAY 2026 to 11 JUN 2026