

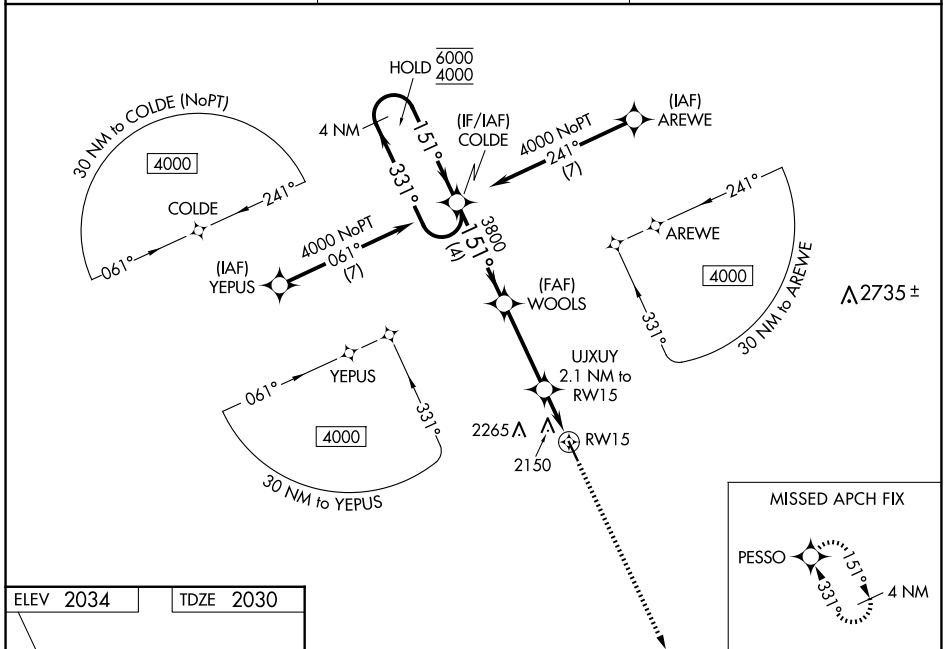
WAAS CH 58047 W15A	APP CRS 151°	Rwy Ldg 4364 TDZE 2030 Apt Elev 2034
--	------------------------	---

RNAV (GPS) RWY 15

ASHLEY MUNI (ASY)

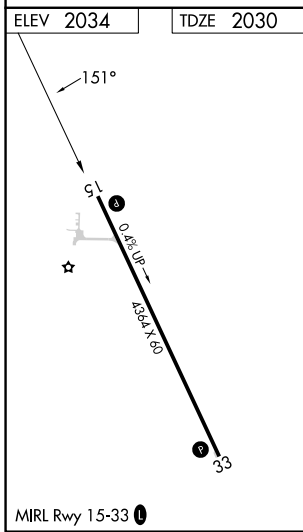
RNP APCH - GPS.	MISSED APPROACH: Climb to 4000 direct PESSO and hold.
▽ Baro-VNAV NA. Rwy 15 helicopter visibility reduction below 3/4 SM NA. ▲ NA Use 7L2 altimeter setting; when not received, use MBG altimeter setting and increase LPV DA to 2448 feet and all visibilities 1/8 SM. Increase LNAV/VNAV DA to 2477 feet and all visibilities 1/4 SM. Increase all MDAs 40 feet and LNAV visibility Cat C/D 1/4 SM, and Circling visibility Cat C 1/4 SM.	

7L2 AWOS-3 118.175	MINNEAPOLIS CENTER 135.25 256.7	CTAF 122.9
------------------------------	---	----------------------



NC-1, 14 MAY 2026 to 11 JUN 2026

NC-1, 14 MAY 2026 to 11 JUN 2026



VGSi and RNAV glidepath not coincident (VGSi Angle 3.00/TCH 27).			
4000 PESSO	4000 COLDE	3800 WOOLS	2720 UJJUY 2.1 NM to RWY 15
6000 4000	331° 151°	3800 3800	2.1 NM
GP 3.00° TCH 40	4 NM	3.4 NM	2.1 NM
CATEGORY	A	B	C
LPV DA	2408-1 378 (400-1)		
LNAV/VNAV DA	2437-1 1/8 407 (500-1 1/8)		
LNAV MDA	2540-1 510 (600-1)	2540-1 3/8 510 (600-1 3/8)	
CIRCLING	2600-1 566 (600-1)	2700-1 666 (700-1)	2800-2 1/2 766 (800-2 1/2)