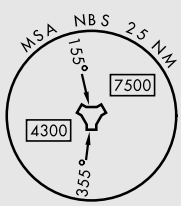
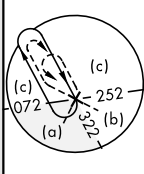
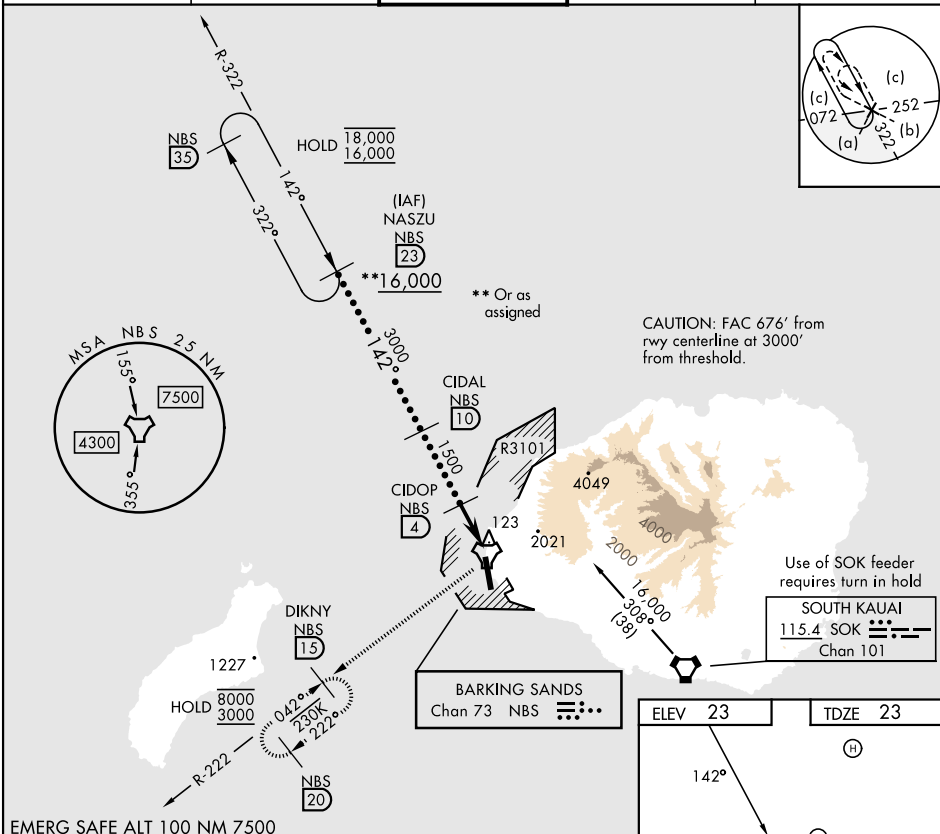


HI-TACAN RWY 16

TACAN NBS Chan 73	APCH CRS 142°	Rwy Idg TDZE Arprt Elev	6002 23 23	[USN]	BARKING SANDS PMRF (PHBK)
-----------------------------	-------------------------	-------------------------------	---------------------------------------	-------	---------------------------

*Circling not authorized E of Rwy 16-34. MISSED APPROACH: Climbing right turn to 3000 on heading 267° and NBS TACAN R-222 to DIKINY and hold.

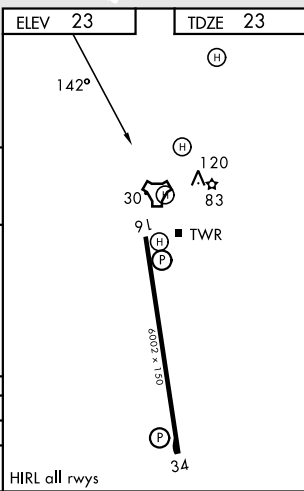
ATIS★ 128.0	HCf APP 126.5 269.4	TOWER★ 126.2 360.2	GND CON★ 124.2 340.2	UNICOM 122.8
-----------------------	-------------------------------	------------------------------	--------------------------------	------------------------



CAUTION: FAC 676' from rwy centerline at 3000' from threshold.

Use of SOK feeder requires turn in hold
SOUTH KAUAI
115.4 SOK
Chan 101

EMERG SAFE ALT 100 NM 7500	NASZU R-322 NBS 23	CIDAL NBS 10	CIDOP NBS 4	NBS 0.9 SHOWS	NBS 0.2	DIKINY NBS 15
**16,000	3000	1500	3.13° TCH 40	3.8 NM	0.6 NM	
CATEGORY	C		D	E		
S-16	460-1¼		437	(500-1¼)		
CIRCLING*	480-1½ 457 (500-1½)		580-2	557	(600-2)	



HI-TACAN RWY 16

PAC, 14 MAY 2026 to 09 JUL 2026

PAC, 14 MAY 2026 to 09 JUL 2026