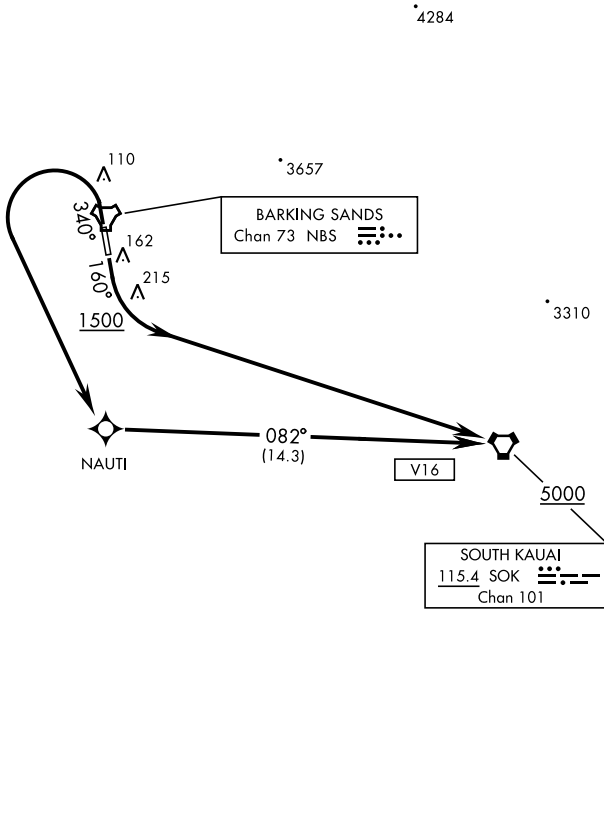


BARKING SANDS TOWER ★  
126.2 360.2  
HCF APP  
126.5 269.4



PAC, 14 MAY 2026 to 09 JUL 2026

PAC, 14 MAY 2026 to 09 JUL 2026



DEPARTURE ROUTE DESCRIPTION

TAKEOFF RWY 16: Climb on heading 160° to 1500, then climbing left turn direct SOK VORTAC maintain 5000 or higher as assigned.

TAKEOFF RWY 34: Climbing left turn direct NAUTI, then track 082° to SOK VORTAC, maintain 5000 or higher as assigned.