

KEKAHA, KAUAI I, HAWAII

# RNAV (GPS) RWY 16

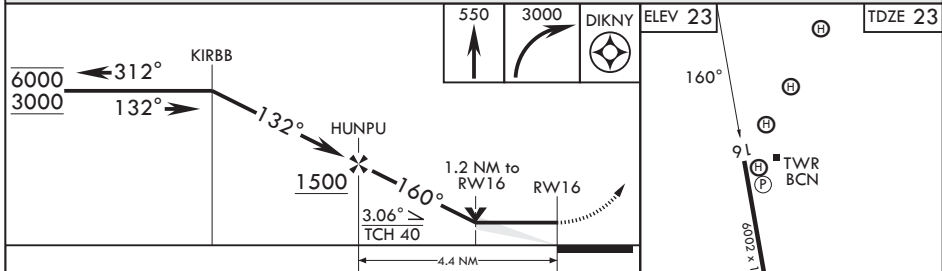
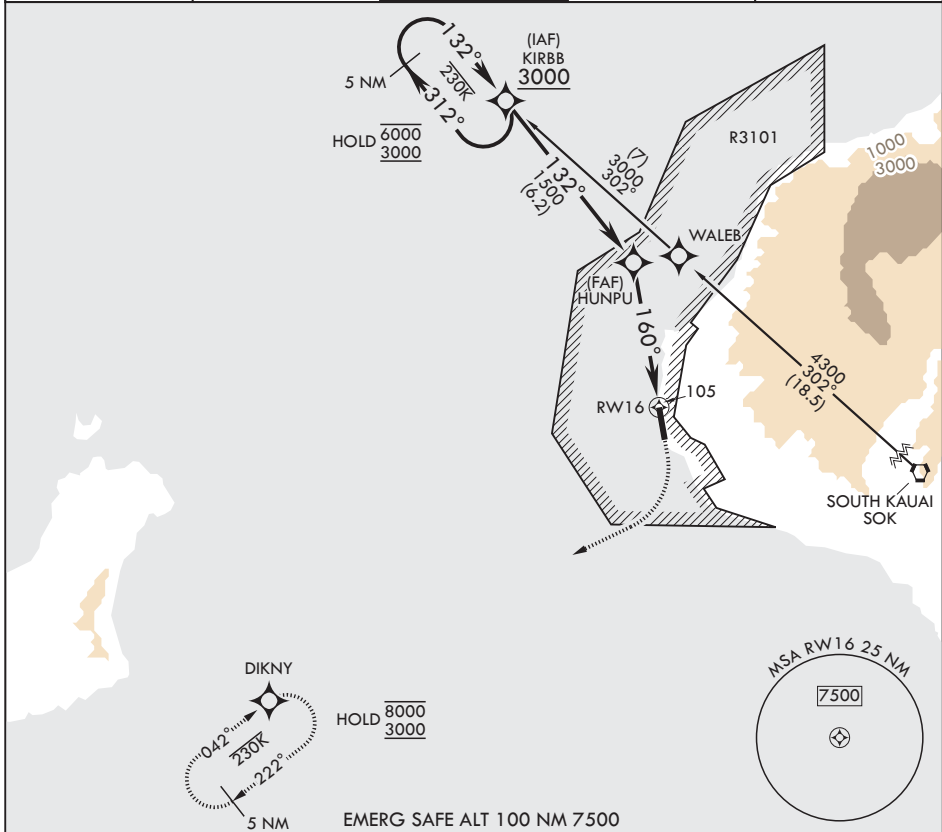
APCH CRS	Rwy Idg	<b>6002</b>
<b>160°</b>	TDZE	<b>23</b>
	Arprt Elev	<b>23</b>

(USN)

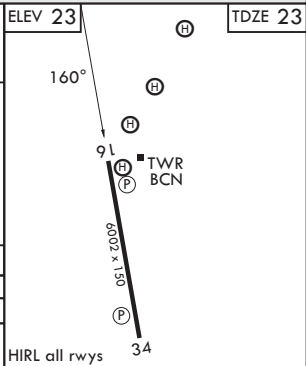
BARKING SANDS PMRF (PHBK)

RNP APCH	MISSED APPROACH: Climb to 550 then climbing right turn to 3000 direct DIKNY and hold.
----------	---

ATIS*	HCF CENTER	TOWER*	GND CON*	UNICOM
<b>128.0</b>	<b>126.5 269.4</b>	<b>126.2 360.2</b>	<b>124.2 340.2</b>	<b>122.8</b>



CATEGORY	A	B	C	D
LNAV MDA	460-1 437 (500-1)	480-1 (500-1)	460-1½ 437 (500-1¼)	580-2 (500-1¼)
CIRCLING*	460-1 437 (500-1)	480-1 457 (500-1)	480-1½ 457 (500-1½)	580-2 557 (600-2)



KEKAHA, KAUAI I, HAWAII

22°01'N - 159°47'W

BARKING SANDS PMRF (PHBK)

Amdt 6 12JUN25

# RNAV (GPS) RWY 16

PAC. 14 MAY 2026 to 09 JUL 2026

PAC. 14 MAY 2026 to 09 JUL 2026