

KEKAHA, KAUAI I, HAWAII

# RNAV (GPS) RWY 34

APCH CRS <b>340°</b>	Rwy Idg <b>6002</b>
	TDZE <b>21</b>
	Arprt Elev <b>23</b>

(USN)

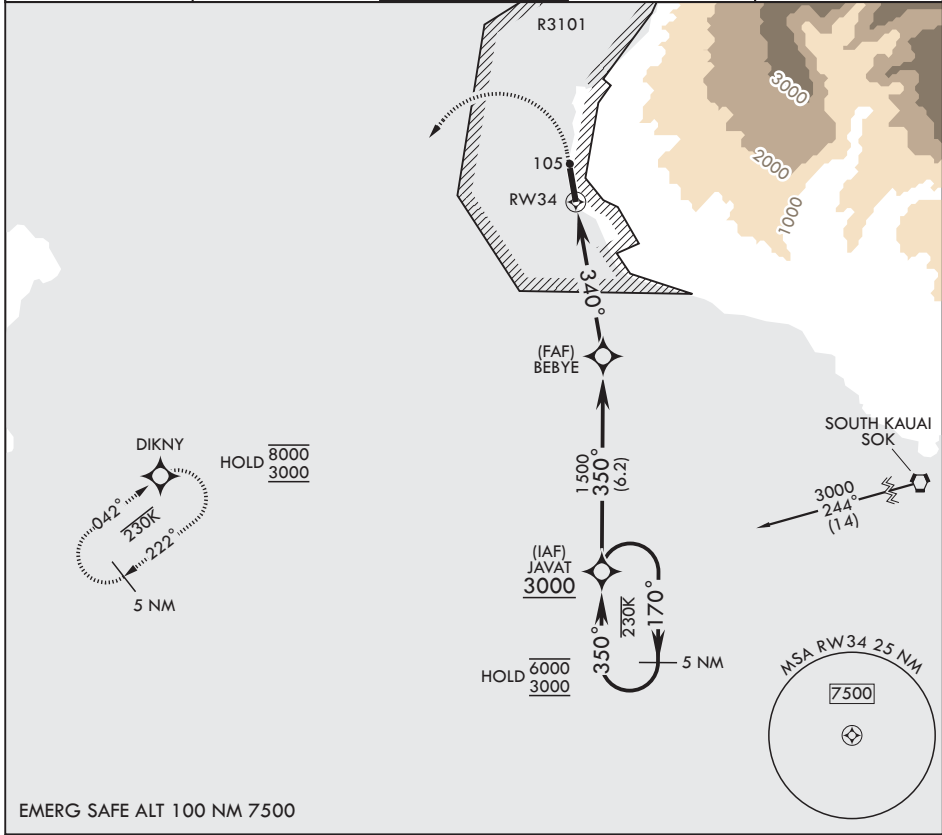
BARKING SANDS PMRF (PHBK)

RNP APCH

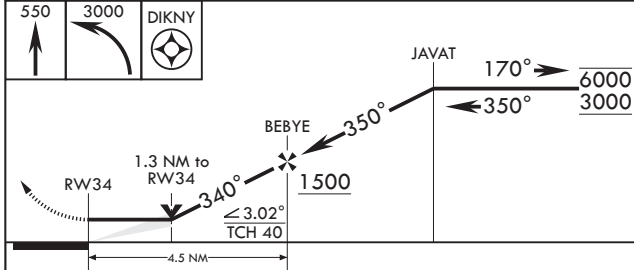
MISSED APPROACH: Climb to 550 then climbing left turn to 3000 direct DIKNY and hold.

▼ \* Circling not authorized E of Rwy 16-34.

ATIS* <b>128.0</b>	HCF CENTER <b>126.5 269.4</b>	TOWER* <b>126.2 360.2</b>	GND CON* <b>124.2 340.2</b>	UNICOM <b>122.8</b>
-----------------------	----------------------------------	------------------------------	--------------------------------	------------------------

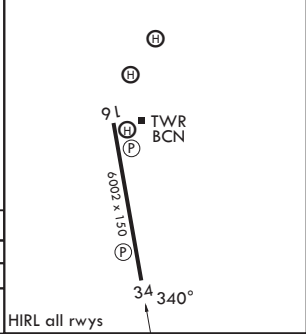


EMERG SAFE ALT 100 NM 7500



ELEV 23	TDZE 21
---------	---------

CATEGORY	A	B	C	D
LNAV MDA	460-1	439 (500-1)	460-1½	439 (500-1½)
CIRCLING*	460-1 437 (500-1)	480-1 457 (500-1)	480-1½ 457 (500-1½)	580-2 557 (600-2)



KEKAHA, KAUAI I, HAWAII

22°01'N - 159°47'W

BARKING SANDS PMRF (PHBK)

Amdt 6 12JUN25

# RNAV (GPS) RWY 34

PAC. 14 MAY 2026 to 09 JUL 2026

PAC. 14 MAY 2026 to 09 JUL 2026