

COPTER TACAN RWY 22

TACAN NGF Chan 93	APCH CRS 192°	Rwy Idg TDZE 7771 Arprt Elev 23
--------------------------	----------------------	--

[USN]

KANEOHE BAY MCAS (PHNG)

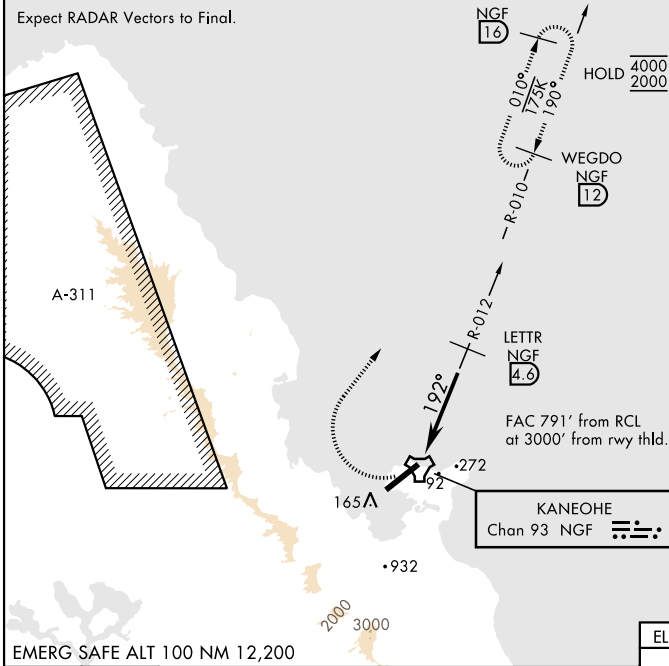
RADAR required	
<p>▼ * Circling not authorized SE of Rwy 04-22.</p> <p>Visibility reduction not authorized.</p>	
ATIS 284.5	APP/DEP CON 125.0 263.5
TOWER 120.7(CTAF) 360.2	
GND CON 338.35	CLNC DEL 294.7
ASR/PAR	

MISSED APPROACH: Climbing right turn to 2000, intercept NGF TACAN R-010 and proceed direct WEGDO and hold.

CAUTION: Mountainous terrain E, S, and W of airfield.

Max procedure airspeed 90 KIAS.

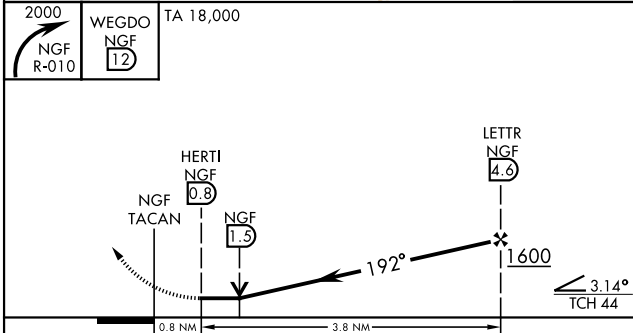
Expect RADAR Vectors to Final.



PAC, 14 MAY 2026 to 09 JUL 2026

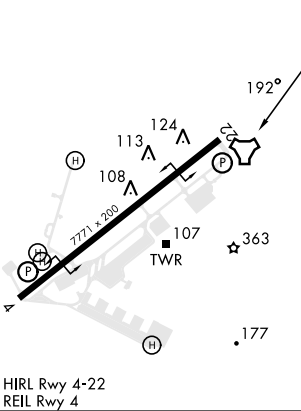
PAC, 14 MAY 2026 to 09 JUL 2026

EMERG SAFE ALT 100 NM 12,200



ELEV	23	TDZE	23
------	----	------	----

CATEGORY	COPTER		
H-22	540-1	517	(600-1)
CIRCLING*	540-1	517	(600-1)



COPTER TACAN RWY 22