

APP CRS	Rwy Idg	5086
175°	TDZE	3176
	Apt Elev	3176

RNAV (GPS) RWY 17

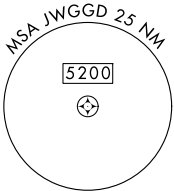
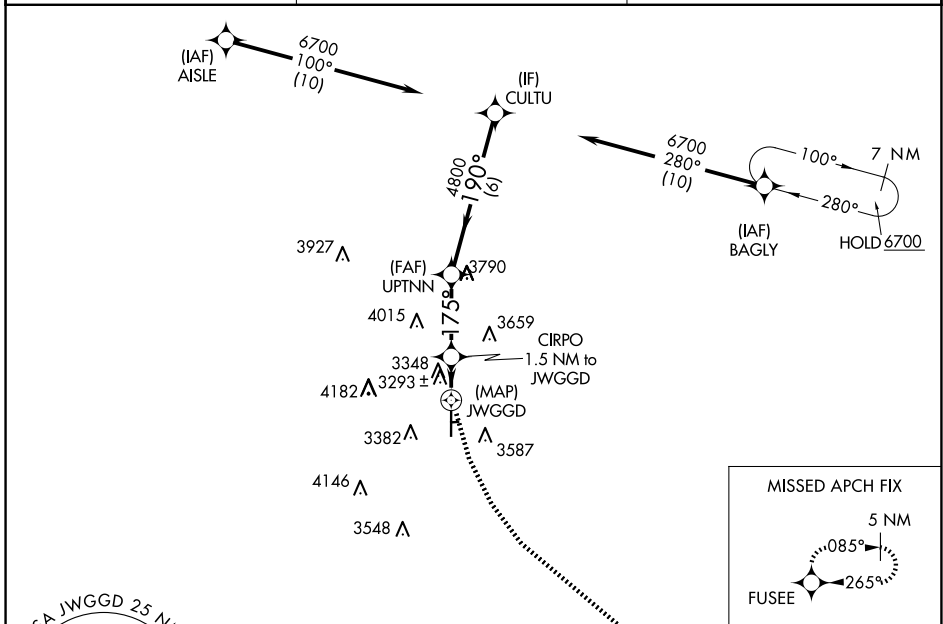
LUBBOCK EXEC AIRPARK (F82)

RNP APCH - GPS.

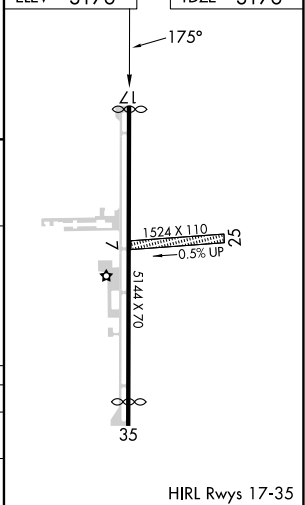
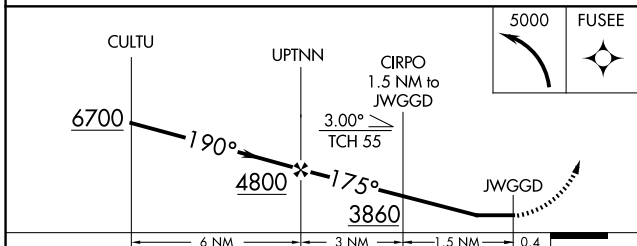
- Use LBB altimeter setting.
- NA Rwy 17 helicopter visibility reduction below 1 SM NA. Circling NA east of Rwy 17-35.

MISSED APPROACH: Climbing left turn to 5000 direct FUSEE and hold.

LBB ASOS 125.3 270.275	LUBBOCK APP CON 119.2 351.8	UNICOM 122.8 (CTAF)
----------------------------------	---------------------------------------	-------------------------------



ELEV 3176	TDZE 3176
-----------	-----------



CATEGORY	A	B	C	D
LNVA MDA	3640-1	464 (500-1)	3640-1 $\frac{3}{8}$ 464 (500-1 $\frac{3}{8}$)	NA
CIRCLING	3700-1 524 (600-1)	3740-1 564 (600-1)	4580-3 1404 (1500-3)	NA

SC-2, 14 MAY 2026 to 11 JUN 2026

SC-2, 14 MAY 2026 to 11 JUN 2026