

COPTER RNAV (GPS) 060°

APCH CRS 060°	Rwy ldg TDZE Arpt Elev	N/A N/A 400
-------------------------	------------------------------	--------------------------

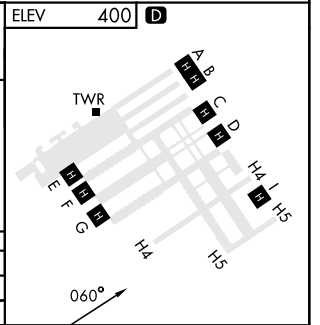
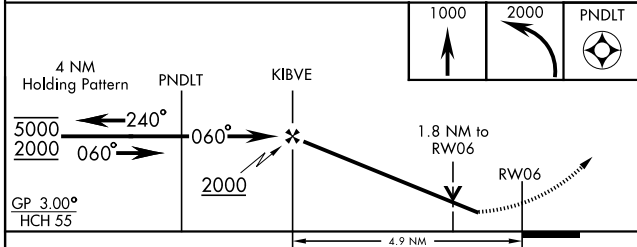
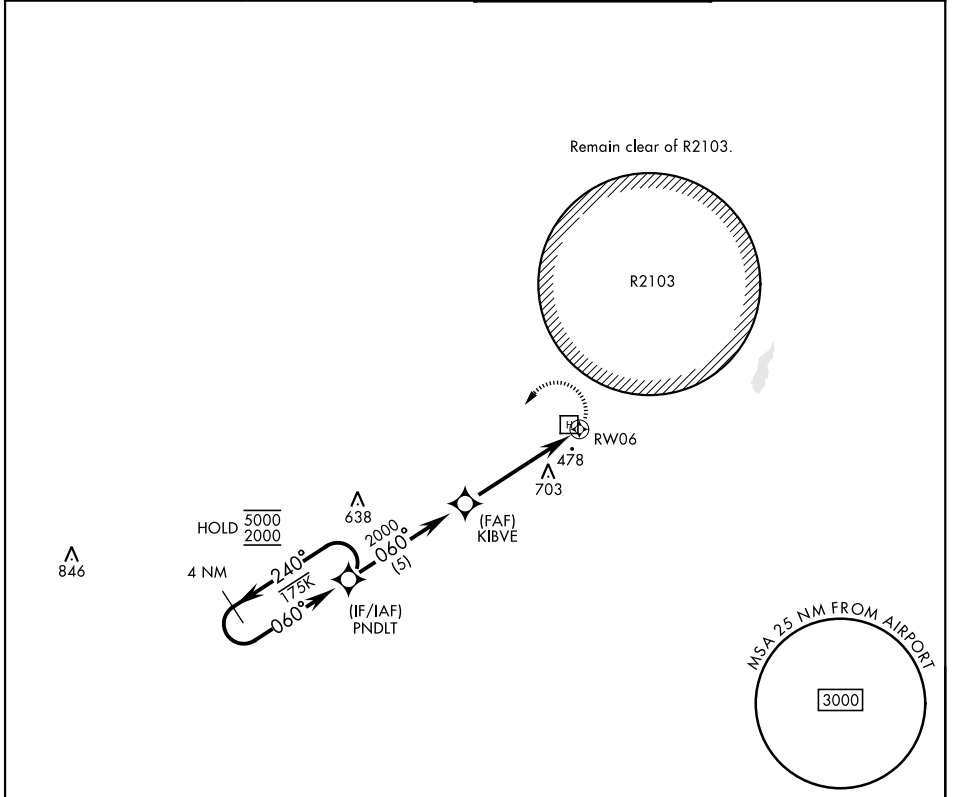
[USA]

SHELL AHP (FORT RUCKER) (KSXS)

RNP APCH-GPS
 ▼ Circling not authorized.
 Visibility reduction below ¾ mile not authorized.
 For Baro-VNAV systems, LNAV/VNAV not authorized below -15°C or above 54°C.

MISSED APPROACH: Climb to 1000 then climbing left turn to 2000 direct PNDLT and hold.

ATIS 376.5	CAIRNS APP CON 133.45 239.4	TOWER ★ 139.123 (CTAF) 244.5 (CTAF)	GND CON 142.425 310.6
----------------------	---------------------------------------	---	---------------------------------



CATEGORY	COPTER		
LNAV/VNAV DA	1000-1¾	600	(600-1¾)
LNAV MDA	1000-1	600	(600-1)

SE-4, 14 MAY 2026 to 11 JUN 2026

SE-4, 14 MAY 2026 to 11 JUN 2026