

FORT RUCKER, ALABAMA

COPTER RNAV (GPS) 100°

APCH CRS 100°	Rwy Idg TDZE Arpt Elev	N/A N/A 400
-------------------------	------------------------------	--------------------------

[USA]

SHELL AHP (FORT RUCKER) (KSXS)

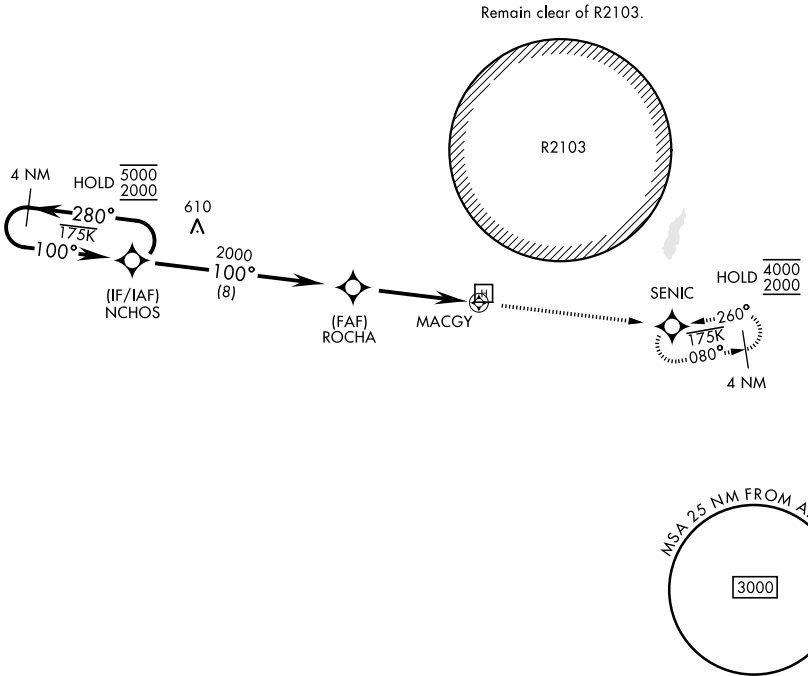
RNP APCH-GPS

▼ Circling not authorized.
 Visibility reduction below 3/4 mile not authorized.
 For Baro-VNAV systems, LNAV/VNAV NA below -15°C
 or above 54°C.

MISSED APPROACH: Climb to 2000 direct SENIC and hold.

ATIS 376.5	CAIRNS APP CON 133.45 239.4	TOWER★ 139.123 (CTAF) 244.5 (CTAF)	GND CON 142.425 310.6
----------------------	---------------------------------------	--	---------------------------------

Final approach course offset 39.99°



SE-4, 14 MAY 2026 to 11 JUN 2026

SE-4, 14 MAY 2026 to 11 JUN 2026

4 NM Holding Pattern	NCHOS	ROCHA	MACGY	SEVIC	ELEV 400	D
5000 2000	280° 100°	100°	2000	1.1 NM to MACGY	3.00° HCH 40	4.6 NM
			0.5			
CATEGORY	COPTER					
LNAV MDA	900-1	500	(500-1)			

FORT RUCKER, ALABAMA

31° 22'N - 85° 51'E

SHELL AHP (FORT RUCKER) (KSXS)

Orig 16APR26

COPTER RNAV (GPS) 100°