

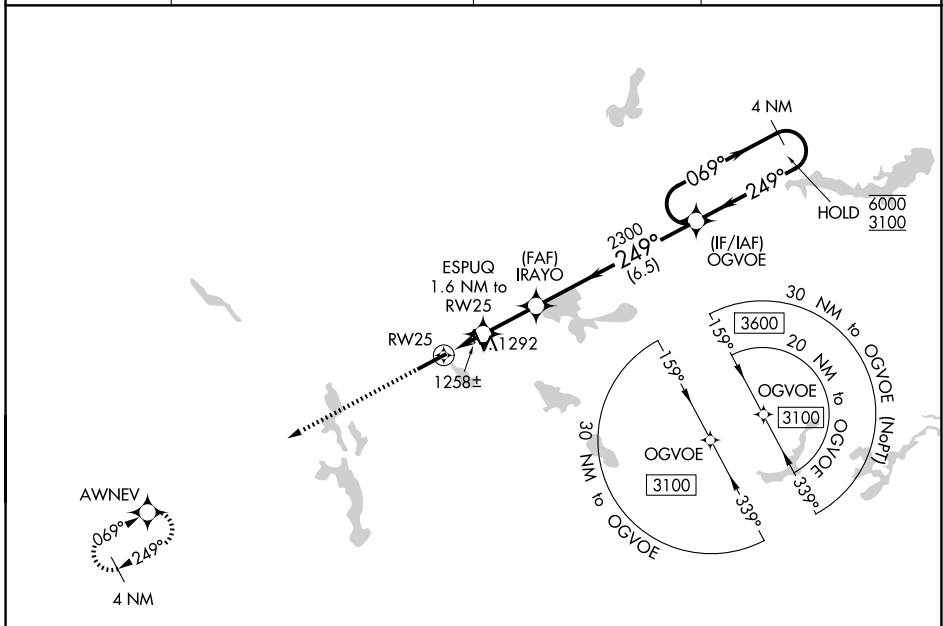
WAAS CH <b>99735</b> <b>W25A</b>	APP CRS <b>249°</b>	Rwy Ldg TDZE Apt Elev	<b>6074</b> <b>1059</b> <b>1068</b>
--	------------------------	-----------------------------	---

# RNAV (GPS) RWY 25

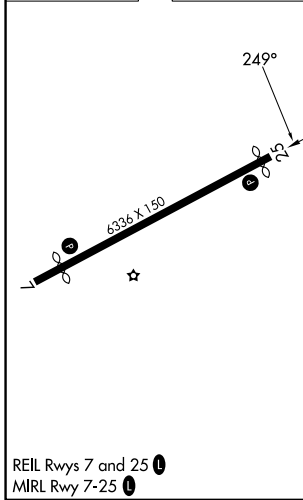
AKRON FULTON INTL (AKR)

RNP APCH.	MISSED APPROACH: Climb to 3100 direct AWNEV and hold.
 	Rwy 25 helicopter visibility reduction below 1 SM NA. Circling Rwy 7 NA at night.

ASOS <b>126.825</b>	CLEVELAND APP CON ★ <b>125.5 371.875</b>	CLNC DEL <b>121.6</b>	UNICOM <b>123.075</b> (CTAF)
------------------------	---	--------------------------	---------------------------------



ELEV 1068	TDZE 1059
-----------	-----------



3100	AWNEV	Visual Segment - Obstacles.	4 NM	
↑			OGVOE Holding Pattern	
ESPUG 1.6 NM to RW25	IRAYO		069° → 6000 ← 249° 3100	
RW25		2300		
1.6 NM	2.2 NM	6.5 NM		
CATEGORY	A	B	C	D
LP MDA	1520-1	461 (500-1)	1520-1 3/8	461 (500-1 3/8)
LNAV MDA	1560-1	501 (500-1)	1560-1 3/8	501 (500-1 3/8)
CIRCLING	1600-1 532 (600-1)	1680-1 612 (700-1)	1800-2 732 (800-2)	1840-2 1/2 772 (800-2 1/2)

REIL Rwy 7 and 25   
MIRL Rwy 7-25

AKRON, OHIO  
Orig-D 08SEP22

41°02'N-81°28'W

# AKRON FULTON INTL (AKR)

## RNAV (GPS) RWY 25

EC-2, 11 JUN 2026 to 09 JUL 2026

EC-2, 11 JUN 2026 to 09 JUL 2026