

HI-ILS or LOC RWY 22

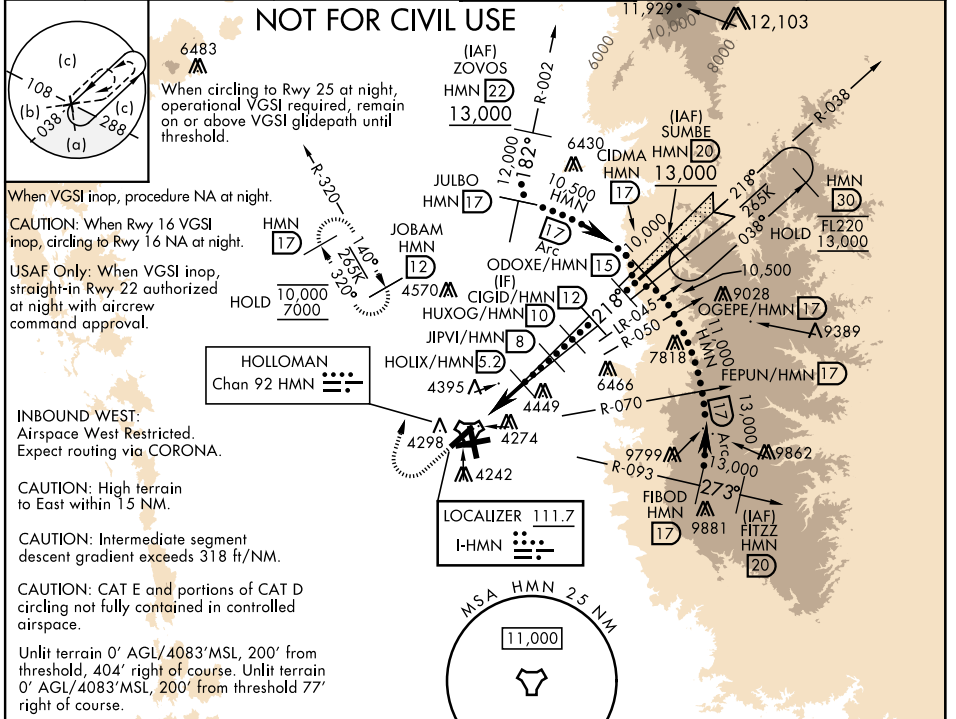
LOC I-HMN 111.7	APCH CRS 218°	Rwy Idg 10,578
		TDZE 4083
		Arpt Elev 4093

[USAF]

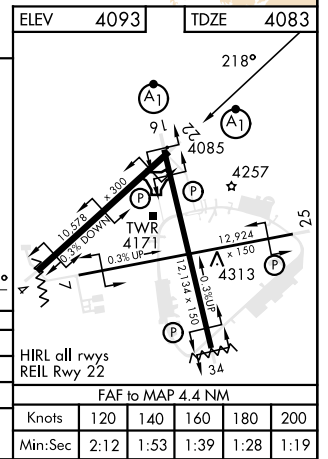
HOLLOMAN AFB (KHMM)

RADAR or DME required.		ALSF-1 	MISSED APPROACH: Climb straight ahead to 7000, passing 5000 turn right and intercept HMN R-320 outbound to JOBAM and hold.	
*When ALS inop, increase vis to 3/4 miles. **When ALS inop, increase vis to 1 1/4 miles.				

ATIS ★ 273.5	ALBUQUERQUE CENTER 132.65 257.6	APP CON 120.6 269.225	TOWER ★ 119.3 254.4	GND CON 127.05 275.8	CLNC DEL 126.7 289.4
------------------------	---	---------------------------------	-------------------------------	--------------------------------	--------------------------------



↑		5000 HMN R-320	7000 JOBAM
CATEGORY	C	D	E
S-ILS 22 *	4283-1/2	200 (200-1/2)	
S-LOC 22 **	4680-1 1/4	597 (600-114)	
CIRCLING	4680-1 3/4 587 (600-134)	5200-3 1107 (1200-3)	5300-3 1207 (1300-3)



HI-ILS or LOC RWY 22

SW-1, 11 JUN 2026 to 09 JUL 2026

SW-1, 11 JUN 2026 to 09 JUL 2026