

HI-TACAN RWY 16

TACAN HMN Chan 92	APCH CRS 162°	Rwy ldg 12,134 TDZE 4083 Arprt Elev 4093
----------------------	------------------	--

[USAF]

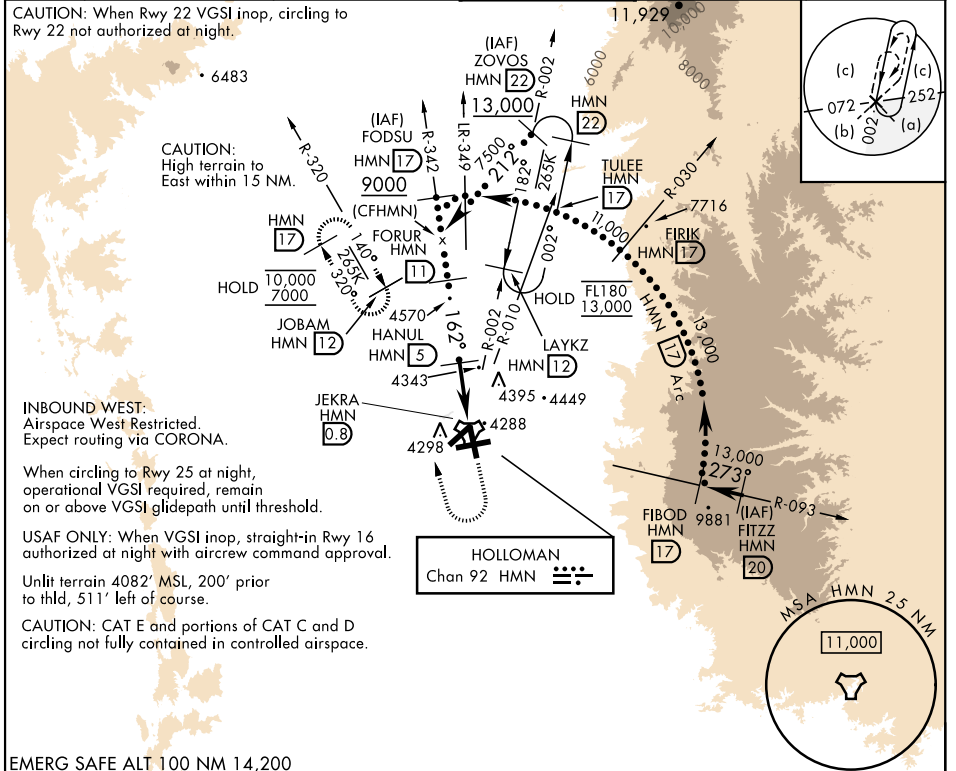
HOLLOMAN AFB (KHMN)

⚠ * When ALS inop, increase CAT CDE vis to 1½ miles.
When VGSi inop, procedure not authorized at night.

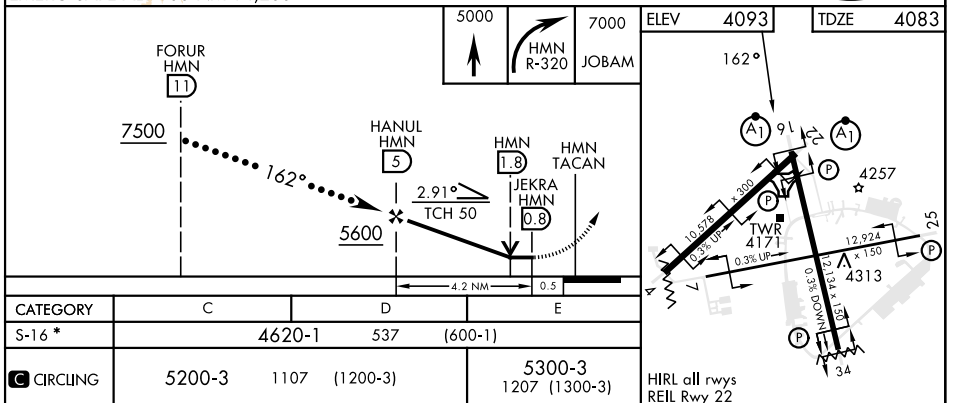
ALSF-1 

MISSED APPROACH: Climb straight ahead to 7000, passing 5000 turn right and intercept HMN R-320 outbound to JOBAM and hold.

ATIS ★ 273.5	ALBUQUERQUE CENTER 132.65 257.6	APP CON 120.6 269.225	TOWER ★ 119.3 254.4	GND CON 127.05 275.8	CLNC DEL 126.7 289.4
-----------------	------------------------------------	--------------------------	------------------------	-------------------------	-------------------------



EMERG SAFE ALT 100 NM 14,200



HI-TACAN RWY 16

SW-1, 11 JUN 2026 to 09 JUL 2026

SW-1, 11 JUN 2026 to 09 JUL 2026