

APCH CRS 338°	Rwy Idg TDZE Arprt Elev	12,134 4058 4093
-------------------------	-------------------------------	---

(USAF)

HOLLOMAN AFB (KHMN)

RNP APCH-GPS

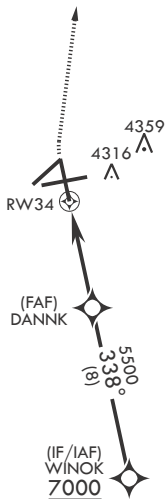
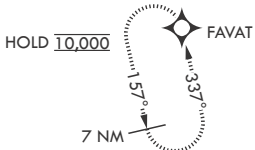
▼ * When circling to Rwy 25 at night, operational VGSI required, remain on or above VGSI glidepath until threshold.

MISSED APPROACH: Climb to 4800 then climbing right turn to 10,000 direct FAVAT and hold, continue climb-in-hold to 10,000.

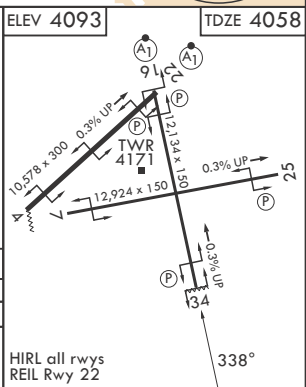
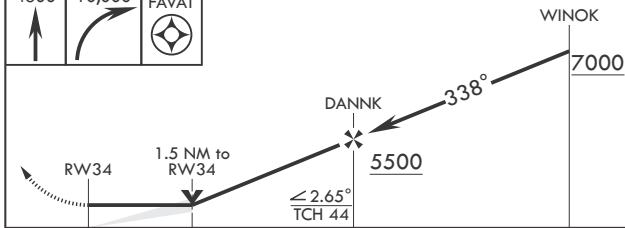
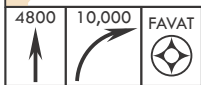
ATIS ★ 273.5	ALBUQUERQUE CENTER 132.65 257.6	APP CON 120.6 269.225	TOWER ★ 119.3 254.4	GND CON 127.05 275.8
------------------------	---	---------------------------------	-------------------------------	--------------------------------

Visibility reduction by helicopter NA.

CAUTION: High terrain to East within 15 NM.



EMERG SAFE ALT 100 NM 14,200



CATEGORY	A	B	C	D	E
RNAV MDA	4500-1	442 (500-1)	4500-1%	442	(500-1%)
CIRCLING*	4620-1	527 (600-1)	5200-3	1107 (1200-3)	5300-3 1207 (1300-3)

HIRL all rwys
REIL Rwy 22

SW-1, 11 JUN 2026 to 09 JUL 2026

SW-1, 11 JUN 2026 to 09 JUL 2026