

APP CRS	Rwy Ldg	8500
191°	TDZE	280
	Apt Elev	285

RNAV (RNP) Z RWY 19

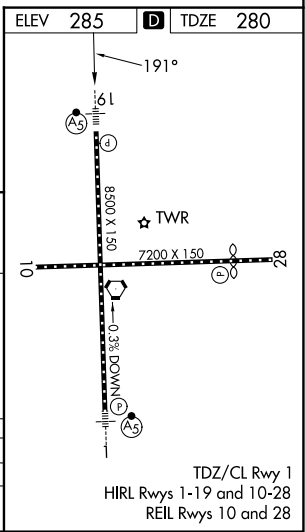
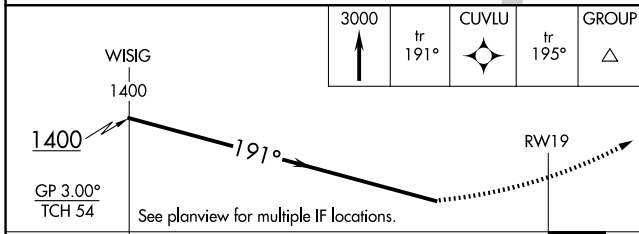
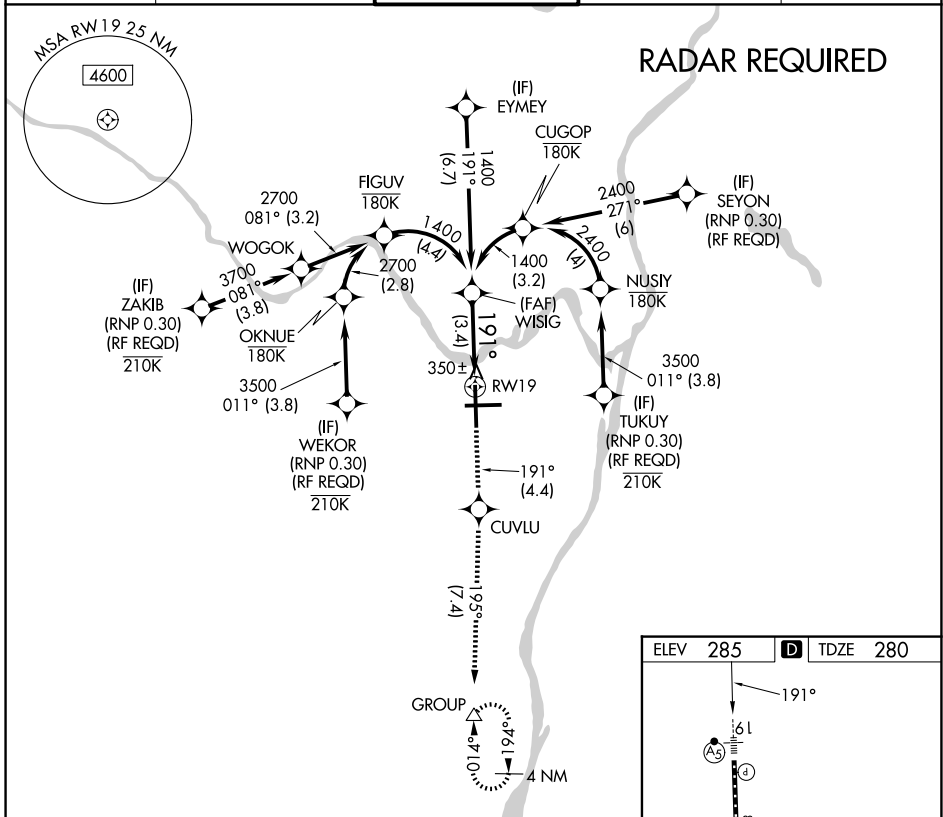
ALBANY INTL (ALB)

RNP AR APCH.
 ▼ For uncompensated Baro-VNAV systems, procedure NA below -15°C or above 47°C. For inop ALS increase RNP 0.30 visibility to 1 1/2.



MISSED APPROACH: Climb to 3000 on track 191° to CUVLU and on track 195° to GROUP and hold.

D-ATIS 120.45	ALBANY APP CON 132.825 307.2	ALBANY TOWER 119.5 257.8	GND CON 121.7 348.6	CLNC DEL 127.50
-------------------------	--	------------------------------------	-------------------------------	---------------------------



CATEGORY	A	B	C	D
RNP 0.30 DA		763/50	483 (500-1)	

AUTHORIZATION REQUIRED

NE-2, 11 JUN 2026 to 09 JUL 2026

NE-2, 11 JUN 2026 to 09 JUL 2026