

GRZZ FOUR DEPARTURE (RNAV)

AL-12 (FAA)

ALBUQUERQUE INTL SUNPORT (ABQ)
ALBUQUERQUE, NEW MEXICO

9200 200 60 01 9202 N000 11 1-WS

TAKEOFF MINIMUMS
 Rwy 3: Standard.
 Rwy 8: Standard with minimum climb of 500' per NM to 8700.

D-ATIS
 118.0 257.7
 CLNC DEL
 119.2 259.3
 GND CON
 121.9 348.6
 ALBUQUERQUE TOWER
 120.3 351.9
 ALBUQUERQUE DEP CON
 127.4 253.5

**TOP ALTITUDE:
FL200**

FLAVA

14000
*12600
0.63°
(68)

14000
*10700
0.75°
(55)

JLPNO

14000
*9800
0.75°
(25)

POPRR

DNIDE

GRZZ
13000

13000
0.40°
(2)

ROWHO

NOTE: Takeoff Rwy 8, do not exceed 210K until passing TYILR.
 NOTE: DME/DME/IRU or GPS required.
 NOTE: For use by turbojet aircraft only.
 NOTE: RNAV 1.
 NOTE: RADAR required for non-GPS equipped aircraft.
 NOTE: If unable to accept climb gradient, advise ATC on initial contact.

NOTE: Chart not to scale.

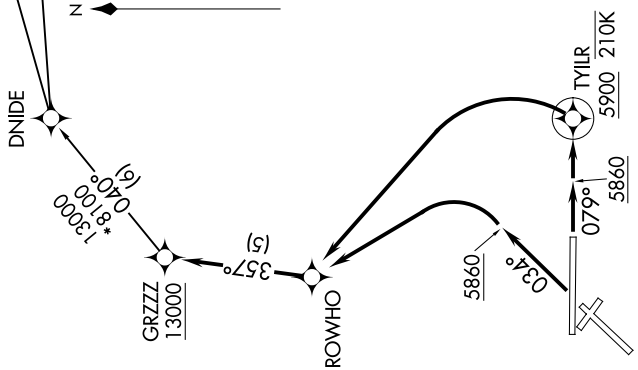
DEPARTURE ROUTE DESCRIPTION

TAKEOFF RUNWAY 3: Climb on heading 034° to 5860, then left turn direct ROWHO, then on track 357° to cross GRZZ at or above 13000, thence

TAKEOFF RUNWAY 8: Climb on heading 079° to 5860 and direct TYILR at or above 5900, then left turn direct ROWHO, then on track 357° to cross GRZZ at or above 13000, thence

. . . . (transition). Maintain FL200, expect filed altitude ten minutes after departure.

FLAVA TRANSITION (GRZZ4.FLAVA)
 JLPNO TRANSITION (GRZZ4.JLPNO)
 POPRR TRANSITION (GRZZ4.POPRR)



GRZZ FOUR DEPARTURE (RNAV)

ALBUQUERQUE, NEW MEXICO
ALBUQUERQUE INTL SUNPORT (ABQ)