

RDRNR THREE DEPARTURE (RNAV) AL-12 (FAA)

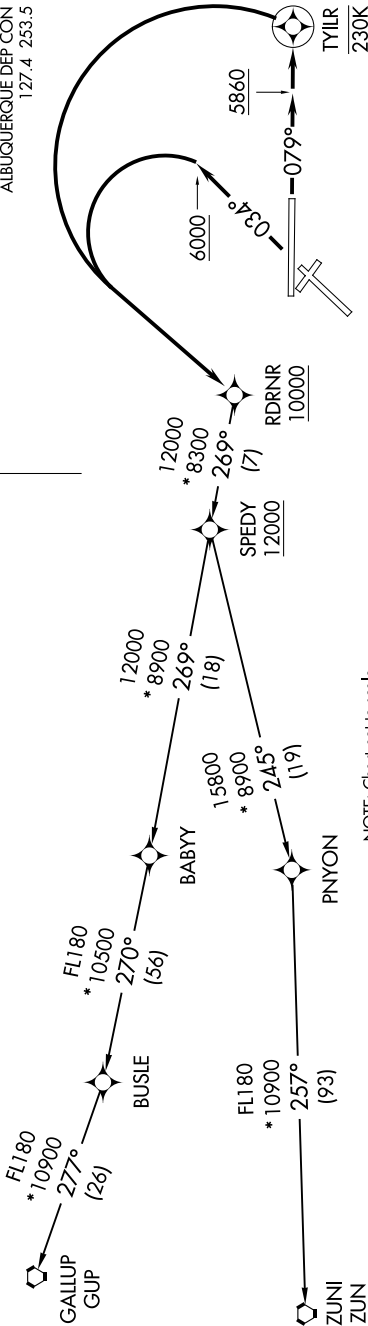
9200 T01 60 of 2020 01 11 '1-MS

**TOP ALTITUDE:
FL200**

D-ATIS
118.0 257.7
CLINC DEL
119.2 259.3
CPDIC
GND CON
121.9 348.6
ALBUQUERQUE TOWER
120.3 351.9
ALBUQUERQUE DEP CON
127.4 253.5



TAKEOFF MINIMUMS
Rwy 3: Standard with minimum climb of 500' per NM to 10900.
Rwy 8: Standard with minimum climb of 500' per NM to 10200.



NOTE: Chart not to scale.

DEPARTURE ROUTE DESCRIPTION

TAKEOFF RUNWAY 3: Climb heading 034° to 6000, then left turn direct RDRNR, cross RDRNR at or above 10000, thence

TAKEOFF RUNWAY 8: Climb heading 079° to 5860, and direct TYLIR, then left turn direct RDRNR, cross RDRNR at or above 10000, thence

. . . . (transition). Maintain FL200. Expect filed altitude ten minutes after departure.

GALLUP TRANSITION (RDRNR3.GUP)

ZUNI TRANSITION (RDRNR3.ZUN)

NOTE: Rwy 8, do not exceed 230K until passing TYLIR.

NOTE: RADAR required.

NOTE: DME/DME/IRU or GPS required.

NOTE: RNAV 1.

NOTE: For Turbojet aircraft only.

NOTE: If unable to accept climb gradient, advise ATC on initial contact.

NOTE: For non-GPS equipped aircraft, ABQ and ONM DME's must be operational.

RDRNR THREE DEPARTURE (RNAV)