

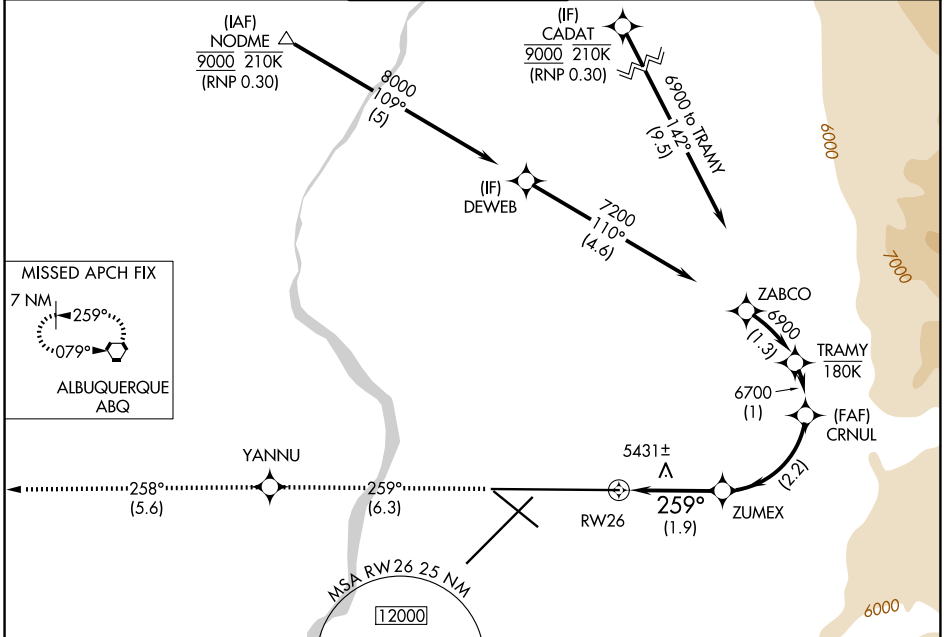
APP CRS <b>259°</b>	Rwy Ldg TDZE Apt Elev	<b>13793</b> <b>5355</b> <b>5355</b>
------------------------	-----------------------------	--

# RNAV (RNP) Y RWY 26

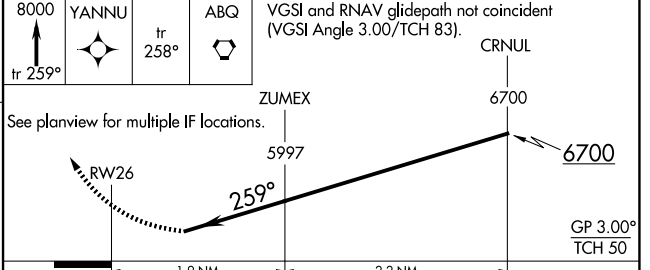
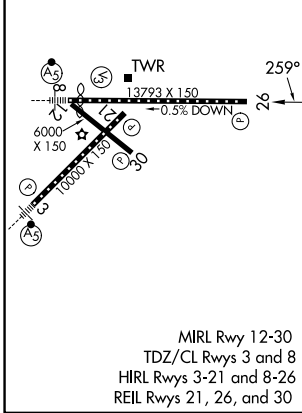
ALBUQUERQUE INTL SUNPORT (ABQ)

RNP AR APCH, RF required.		MISSED APPROACH: Climb to 8000 on track 259° to YANNU and on track 258° to ABQ VORTAC and hold.			
ASR For uncompensated Baro-VNAV systems, procedure NA below -12°C or above 48°C.					

D-ATIS <b>118.0 257.7</b>	ALBUQUERQUE APP CON <b>123.9 354.1</b>	ALBUQUERQUE TOWER <b>120.3 351.9</b>	GND CON <b>121.9 348.6</b>	CLNC DEL <b>119.2 259.3</b>	CPDLC
------------------------------	---	---	-------------------------------	--------------------------------	-------



ELEV 5355	<b>D</b>	TDZE 5355
-----------	----------	-----------



CATEGORY	A	B	C	D
RNP 0.15 DA	5728-1¼ 373 (400-1¼)			

**AUTHORIZATION REQUIRED**

SW-1, 11 JUN 2026 to 09 JUL 2026

SW-1, 11 JUN 2026 to 09 JUL 2026