

APP CRS	Rwy Ldg	<b>10000</b>
<b>214°</b>	TDZE	<b>5316</b>
	Apt Elev	<b>5355</b>

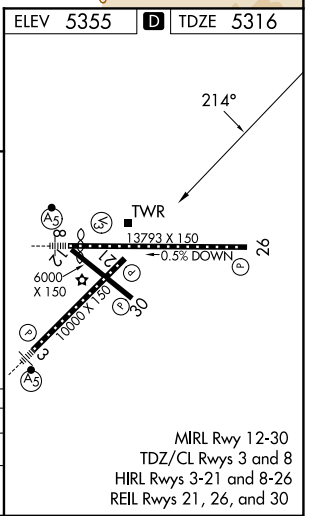
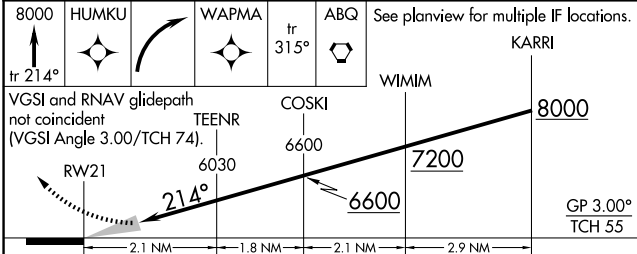
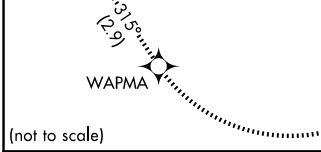
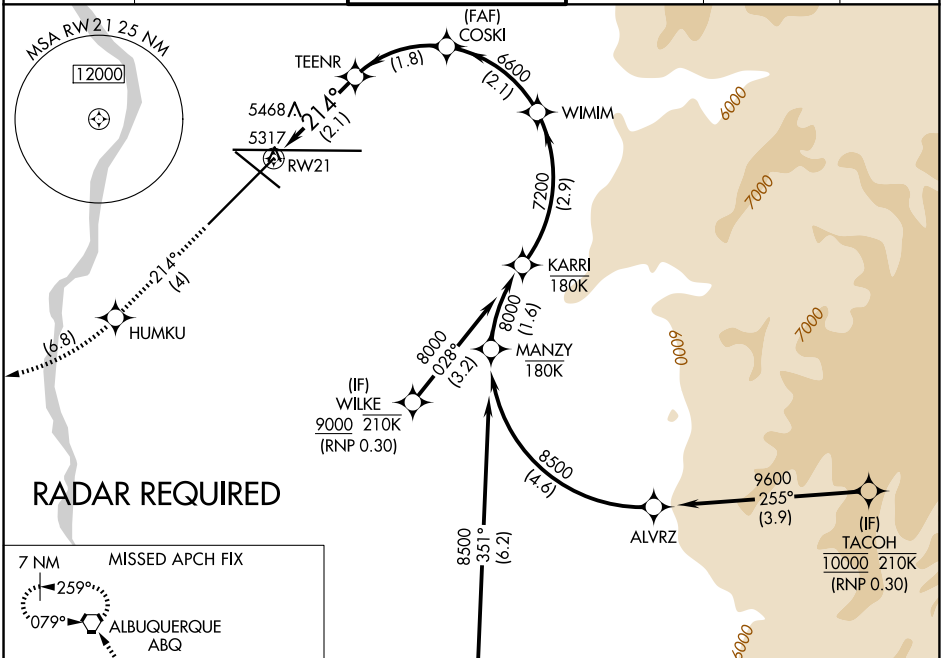
# RNAV (RNP) Z RWY 21

ALBUQUERQUE INTL SUNPORT (ABQ)

**ASR** For uncompensated Baro-VNAV systems, procedure NA below -12°C (11°F) or above 47°C (116°F). RF required. GPS required.

**MISSED APPROACH:** Climb to 8000 on track 214° to HUMKU, right turn to WAPMA, then on track 315° to ABQ VORTAC and hold.

D-ATIS	ALBUQUERQUE APP CON	ALBUQUERQUE TOWER	GND CON	CLNC DEL	CPDLC
<b>118.0 257.7</b>	<b>123.9 354.1</b>	<b>120.3 351.9</b>	<b>121.9 348.6</b>	<b>119.2 259.3</b>	



CATEGORY	A	B	C	D
RNP 0.30 DA	5755-1½	439 (400-1½)		

**AUTHORIZATION REQUIRED**

SW-1, 11 JUN 2026 to 09 JUL 2026

SW-1, 11 JUN 2026 to 09 JUL 2026