

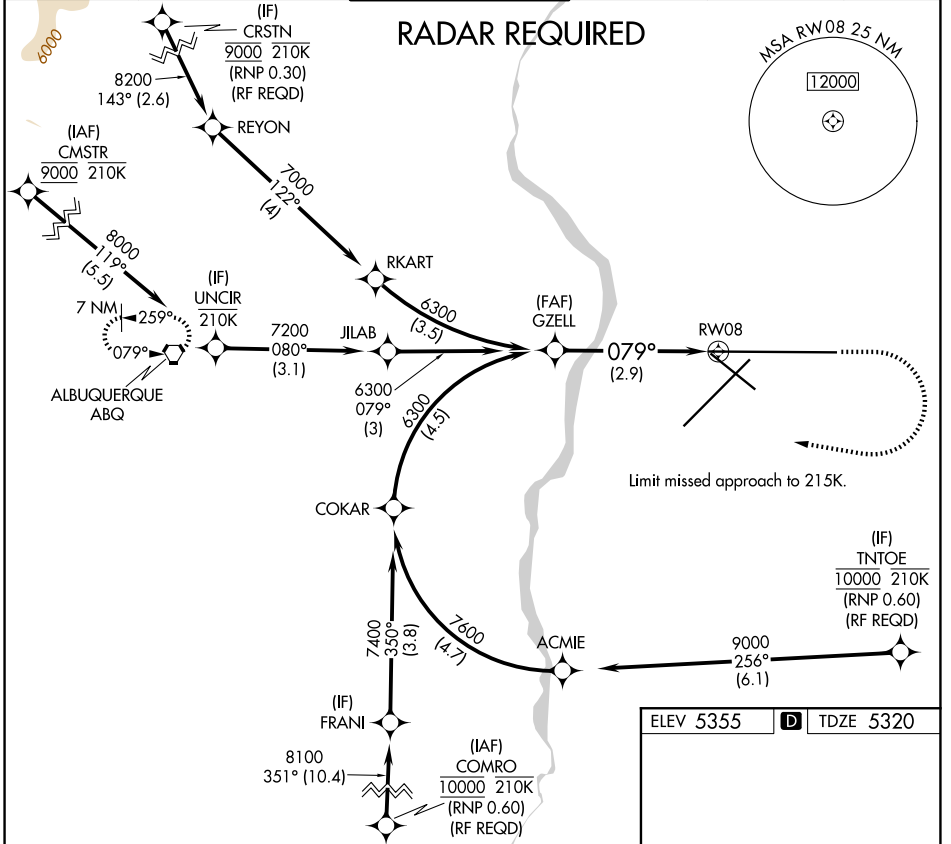
APP CRS <b>079°</b>	Rwy Ldg TDZE Apt Elev	<b>12793</b> <b>5320</b> <b>5355</b>
------------------------	-----------------------------	--

# RNAV (RNP) Z RWY 8

ALBUQUERQUE INTL SUNPORT (ABQ)

<p><b>ASR</b> For uncompensated Baro-VNAV systems, procedure NA below -12°C (11°F) or above 47°C (117°F). For inop MALSRL, increase RNP 0.30 all Cats visibility to RVR 4700. GPS required.</p>	<p><b>MALSRL</b></p>	<p><b>MISSED APPROACH:</b> Climb to 5900 then climbing right turn to 8000 direct ABQ VORTAC and hold.</p>
---	----------------------	---

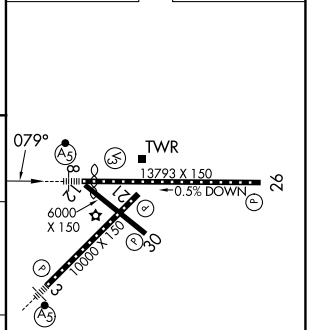
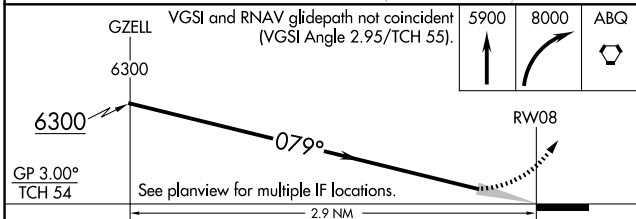
D-ATIS <b>118.0 257.7</b>	ALBUQUERQUE APP CON <b>123.9 354.1</b>	ALBUQUERQUE TOWER <b>120.3 351.9</b>	GND CON <b>121.9 348.6</b>	CLNC DEL <b>119.2 259.3</b>	CPDLC
------------------------------	---	---	-------------------------------	--------------------------------	-------



SW-1, 11 JUN 2026 to 09 JUL 2026

SW-1, 11 JUN 2026 to 09 JUL 2026

ELEV 5355	<b>D</b>	TDZE 5320
-----------	----------	-----------



CATEGORY	A	B	C	D
RNP 0.30 DA	5619/24		299 (300-1/2)	

## AUTHORIZATION REQUIRED

MIRL Rwy 12-30  
TDZ/CL Rwys 3 and 8  
HIRL Rwys 3-21 and 8-26  
REIL Rwys 21, 26, and 30