

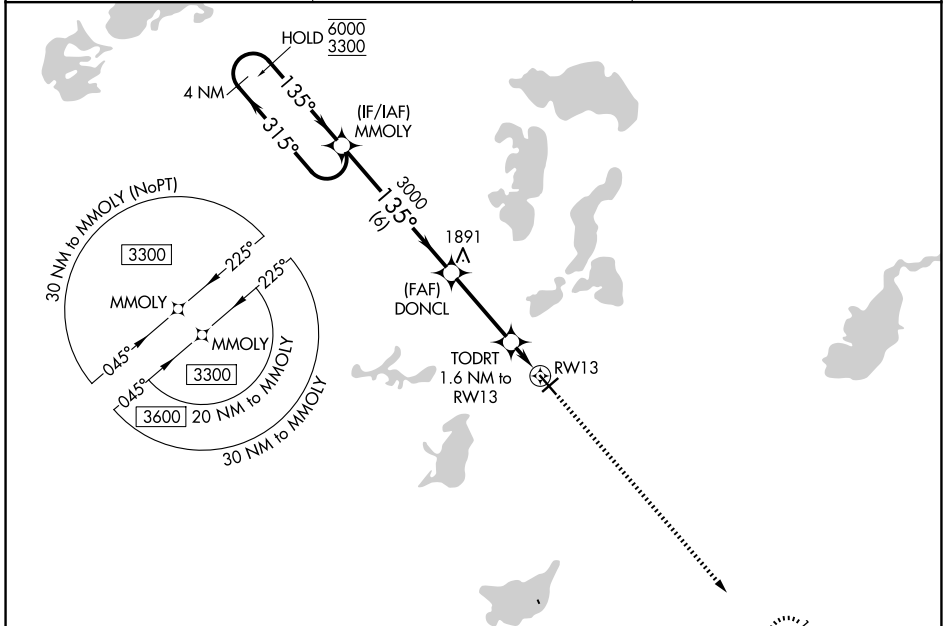
WAAS CH <b>50245</b> <b>W13A</b>	APP CRS <b>135°</b>	Rwy Ldg TDZE Apt Elev	<b>5099</b> <b>1424</b> <b>1425</b>
--	------------------------	-----------------------------	---

# RNAV (GPS) RWY 13

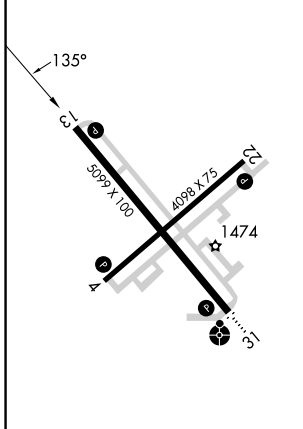
ALEXANDRIA RGNL/CHANDLER FLD (A.XN)

RNP APCH - GPS.	MISSED APPROACH: Climb to 3600 direct WUNYE and hold.
For uncompensated Baro-VNAV systems, LNAV/VNAV NA below -24°C or above 54°C.	

ASOS <b>118.375</b>	MINNEAPOLIS CENTER <b>126.1 269.2</b>	UNICOM <b>123.0 (CTAF) 0</b>
------------------------	--	---------------------------------

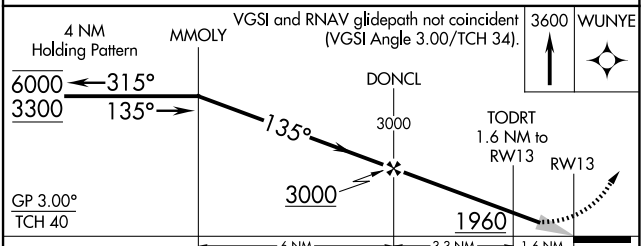


ELEV 1425	TDZE 1424
-----------	-----------



REIL Rws 4, 13, and 22

MIRL Rws 4-22 and 13-31



	A	B	C	D
CATEGORY				
LPV DA	1674-1		250 (300-1)	
LNAV/VNAV DA	1721-1		297 (300-1)	
LNAV MDA	1800-1		376 (400-1)	
CIRCLING	1900-1	475 (500-1)	1940-1½ 515 (600-1½)	2000-2 575 (600-2)

NC-1, 11 JUN 2026 to 09 JUL 2026

NC-1, 11 JUN 2026 to 09 JUL 2026