

WAAS CH <b>61007</b> <b>W31A</b>	APP CRS <b>315°</b>	Rwy Ldg TDZE <b>1423</b> Apt Elev <b>1425</b>	<b>5099</b>
----------------------------------------	------------------------	-----------------------------------------------------	-------------

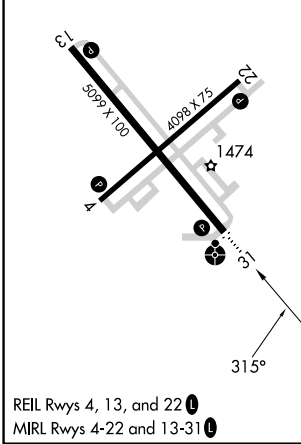
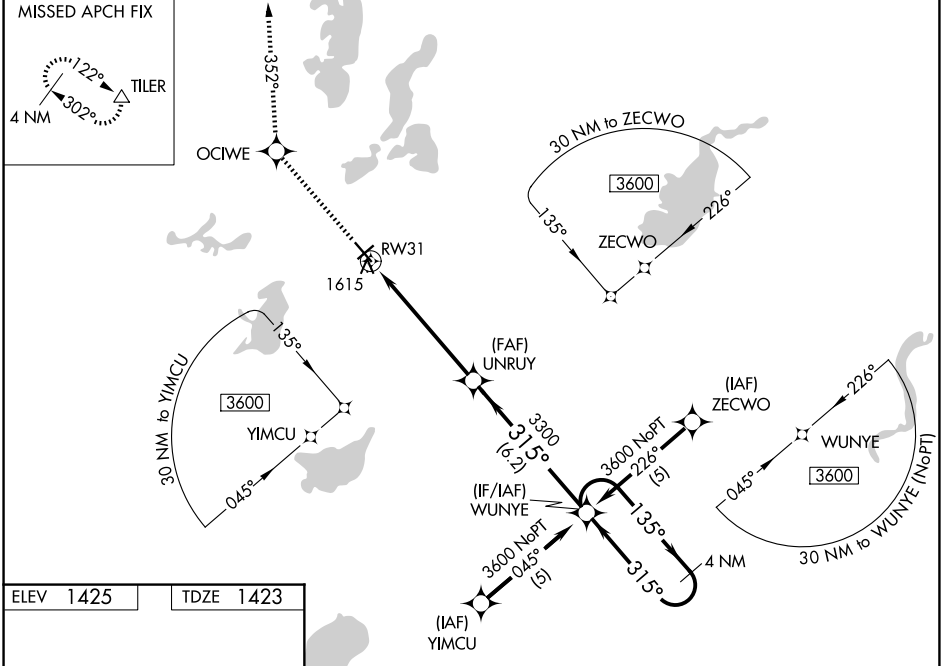
# RNAV (GPS) RWY 31

ALEXANDRIA RGNL/CHANDLER FLD (A.XN)

**⚠ Inoperative table does not apply to LPV & LNAV/VNAV Cats A/B/C and LNAV Cat C. For uncompensated Baro-VNAV systems, LNAV/VNAV NA below -17°C (2°F) or above 46°C (114°F). DME/DME RNP -0.3 NA. VDP and Baro-VNAV NA when using Glenwood altimeter setting. When local altimeter setting not received, use Glenwood altimeter setting and increase all DAs/MDAs 40 feet and increase LPV and LNAV/VNAV visibilities ½ mile all Cats.**

**ODALS**  
MISSED APPROACH: Climb to 3500 direct OCFWE and via 352° track to TILER and hold.

ASOS <b>118.375</b>	MINNEAPOLIS CENTER <b>126.1 269.2</b>	UNICOM <b>123.0 (CTAF) 0</b>
------------------------	------------------------------------------	---------------------------------



ELEV 1425	TDZE 1423				
3500	OCIFE	tr 352°	TILER	WUNYE	4 NM Holding Pattern
*LNAV only.					
UNRUJ		RW31			
1.3 NM		4.4 NM		6.2 NM	
3300		315°		3600	
135°		315°		GP 3.00° TCH 49	
CATEGORY	A	B	C	D	
LPV DA	1815-1¼		392 (400-1¼)		
LNAV/VNAV DA	1885-1½		462 (500-1½)		
LNAV MDA	1880-¾	457 (500-¾)	1880-1¼ 457 (500-1¼)	1880-1½ 457 (500-1½)	
CIRCLING	1920-1	495 (500-1)	1940-1½ 515 (600-1½)	2000-2 575 (600-2)	

NC-1, 11 JUN 2026 to 09 JUL 2026

NC-1, 11 JUN 2026 to 09 JUL 2026