

WAAS CH 82718 W04A	APP CRS 038°	Rwy Ldg 13502 TDZE 3607 Apt Elev 3607
--	------------------------	--

RNAV (GPS) Y RWY 4

RICK HUSBAND AMARILLO INTL (AMA)

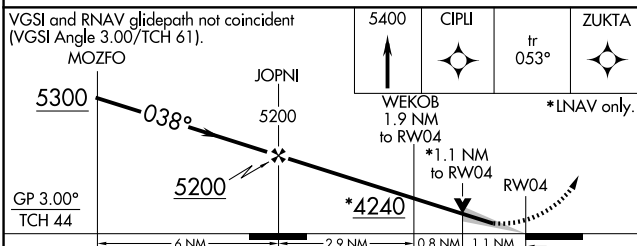
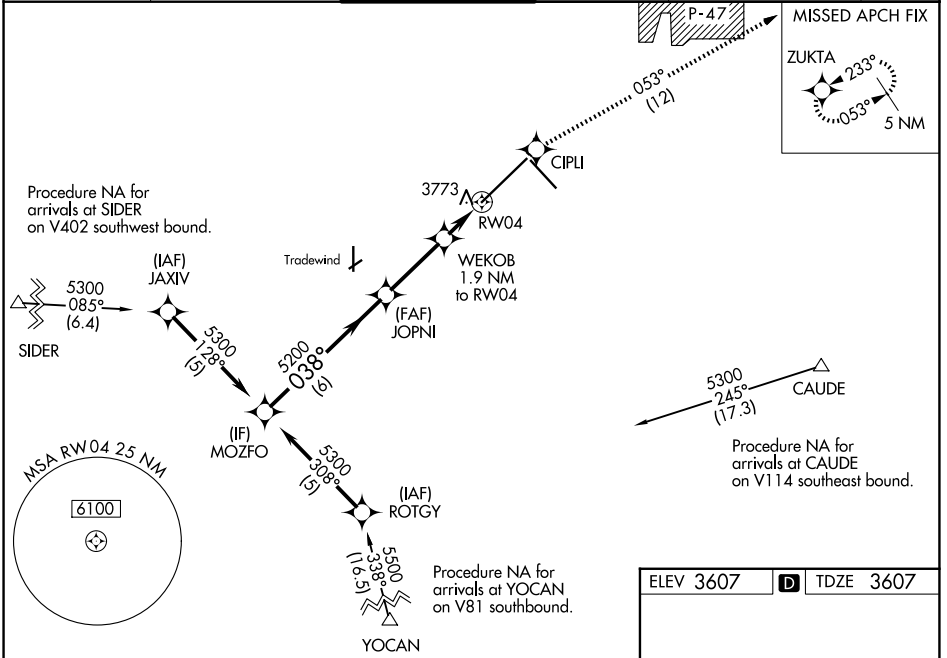
RNP APCH.

ASR
For uncompensated Baro-VNAV systems, LNAV/VNAV NA below -22°C or above 41°C. For inop ALS, increase LPV Cat E visibility to RVR 4000, and LNAV/VNAV and LNAV Cat E to 1¼ SM.
** RVR 1800 authorized with use of FD or AP or HUD to DA.

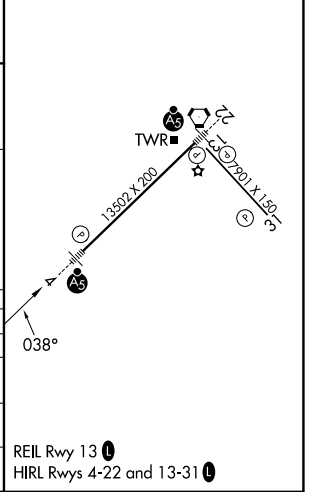


MISSED APPROACH: Climb to 5400 direct CIPLI and on track 053° to ZUKTA and hold.

ATIS 118.85 350.3	AMARILLO APP CON* 119.5 307.0	AMARILLO TOWER* 118.3 (CTAF) 257.9	GND CON 121.9 348.6	CLNC DEL 121.65 239.275	UNICOM 122.95
-----------------------------	---	--	-------------------------------	-----------------------------------	-------------------------



ELEV 3607	D TDZE 3607
-----------	--------------------



CATEGORY	A	B	C	D	E
LPV DA **	3807/24		200 (200-1/2)		
LNAV/VNAV DA	4028/50		421 (500-1)		
LNAV MDA	4040/24	433 (500-1/2)	4040/40 433 (500-3/4)	4040/50	433 (500-1)
CIRCLING	4080-1	473 (500-1)	4240-1 3/4 633 (700-1 3/4)	4280-2 1/4 673 (700-2 1/4)	4460-3 853 (900-3)

SC-2, 11 JUN 2026 to 09 JUL 2026

SC-2, 11 JUN 2026 to 09 JUL 2026